

Suzhou Changmu Drive Co., Ltd.



Changmu Robot- Reliable, Fast and Diversified. Choosing Changmu Robot is equivalent to having the most cost-effective robot on the market today. You can benefit from our complete range of products.

ABOUT CHANGMU

Suzhou Changmu Drive Co., Ltd. is an enterprise specialized in design, R&D and manufacturing of industrial robot, which has software copyright and multiple utility models and invention patents. The produced industrial robots have functions such as welding, handling, spraying...

CM is based on customer-oriented, with advanced technology and management experience that is integrated with creativity and highest standards, which is committed to producing zero trouble products. No matter what you want to do, or specific task you face, CM robot can fulfill all your desire.

Perfect product line, application of different types of functions enrich your choice; Efficient work team and high quality work adapt and satisfy clients' requirements much quicker and efficiently.

We will be your most faithful partner!

CHANGMU ROBOTICS WORKSHOP PRODUCTS

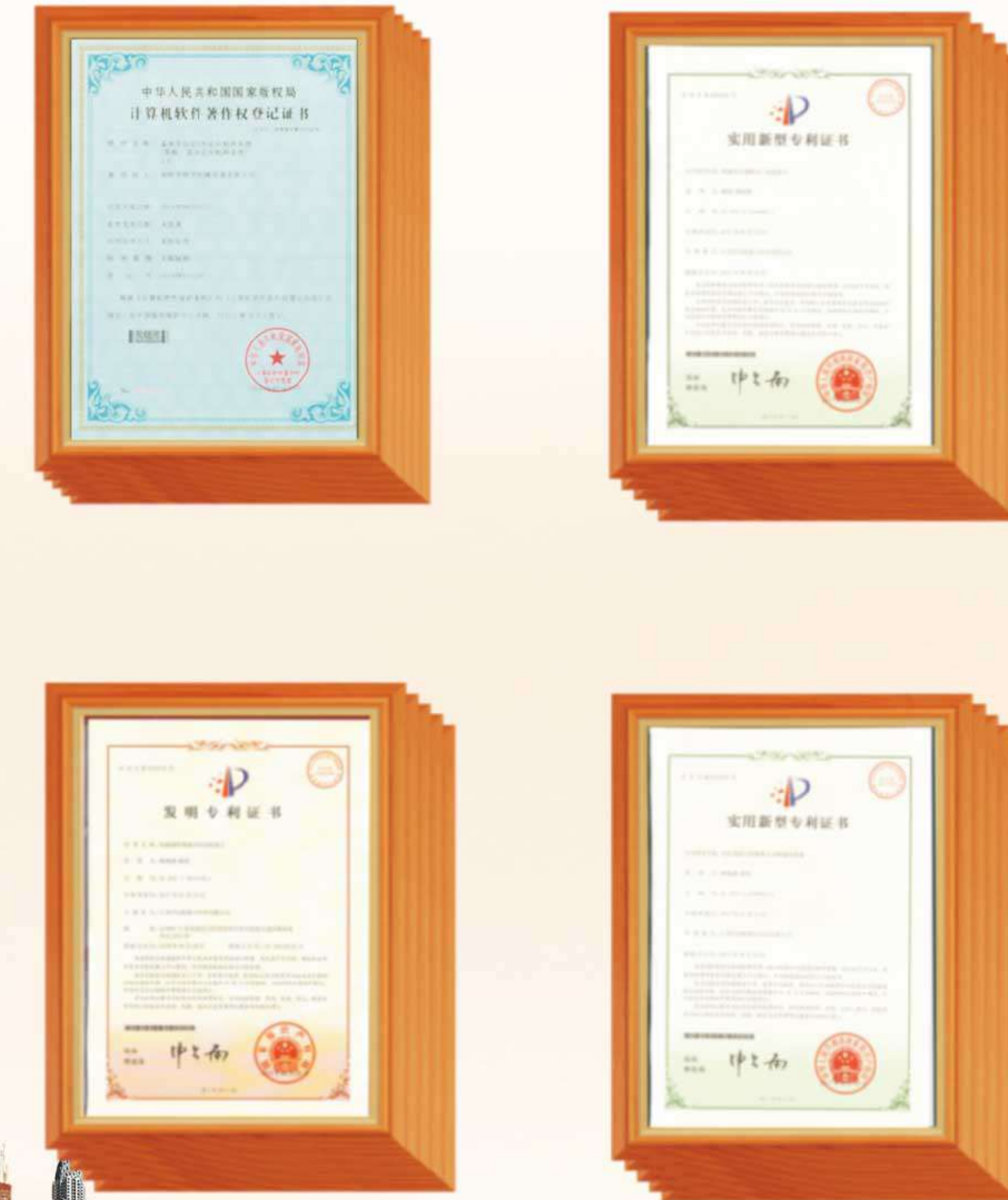


THERE IS AN ADVANCED INDUSTRIAL MANAGEMENT SYSTEM WITH MODERNIZATION AND SCIENTIFIC IN THE COMPANY, ADOPTING ADVANCED GREEN EQUIPMENTS AND TECHNOLOGIES. ADVOCATE CONCEPT

PLANT ENVIRONMENT



ENTERPRISE HONOR



Reliable and precision

Committed to achieving the best return on investment, using intelligent design, having characteristics such as cost optimization, easy maintenance, high reliability... Reliable technology and firm structural components ensure maximum utilization and highest output. Therefore, it is conducive to achieving the best return on investment and overall cost.

Implement the goal faster, increase production

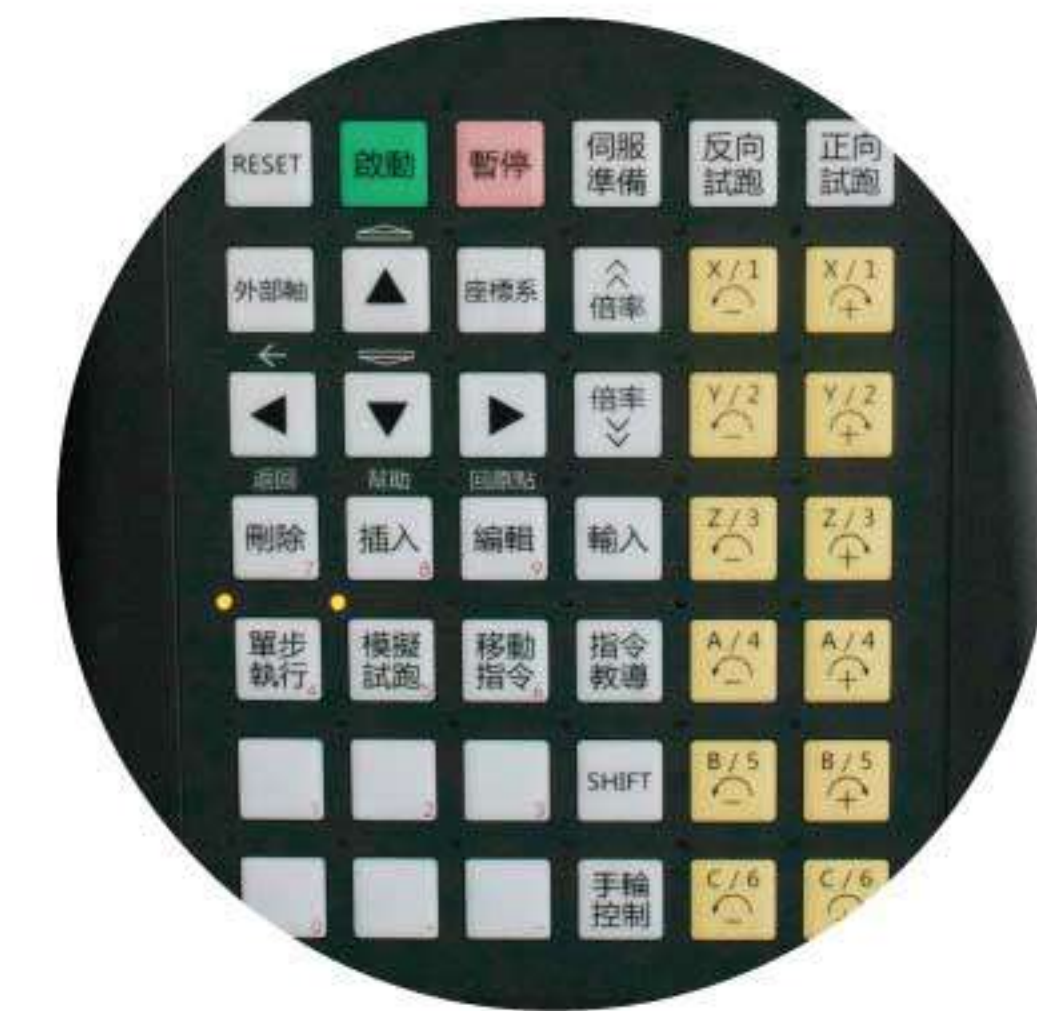
As one of the fastest domestic robots in its load level, it is a product that is tailored to the shortest cycle time and the highest output industry in production. Its perfect coordinated components and potential performance advantages can create maximum value with the shortest beat time.

FAST PROGRAMMING QUICK GRASP



A display-Diversified function

Can be used for welding, stamping, palletizing...
Continuous update, free upgrade



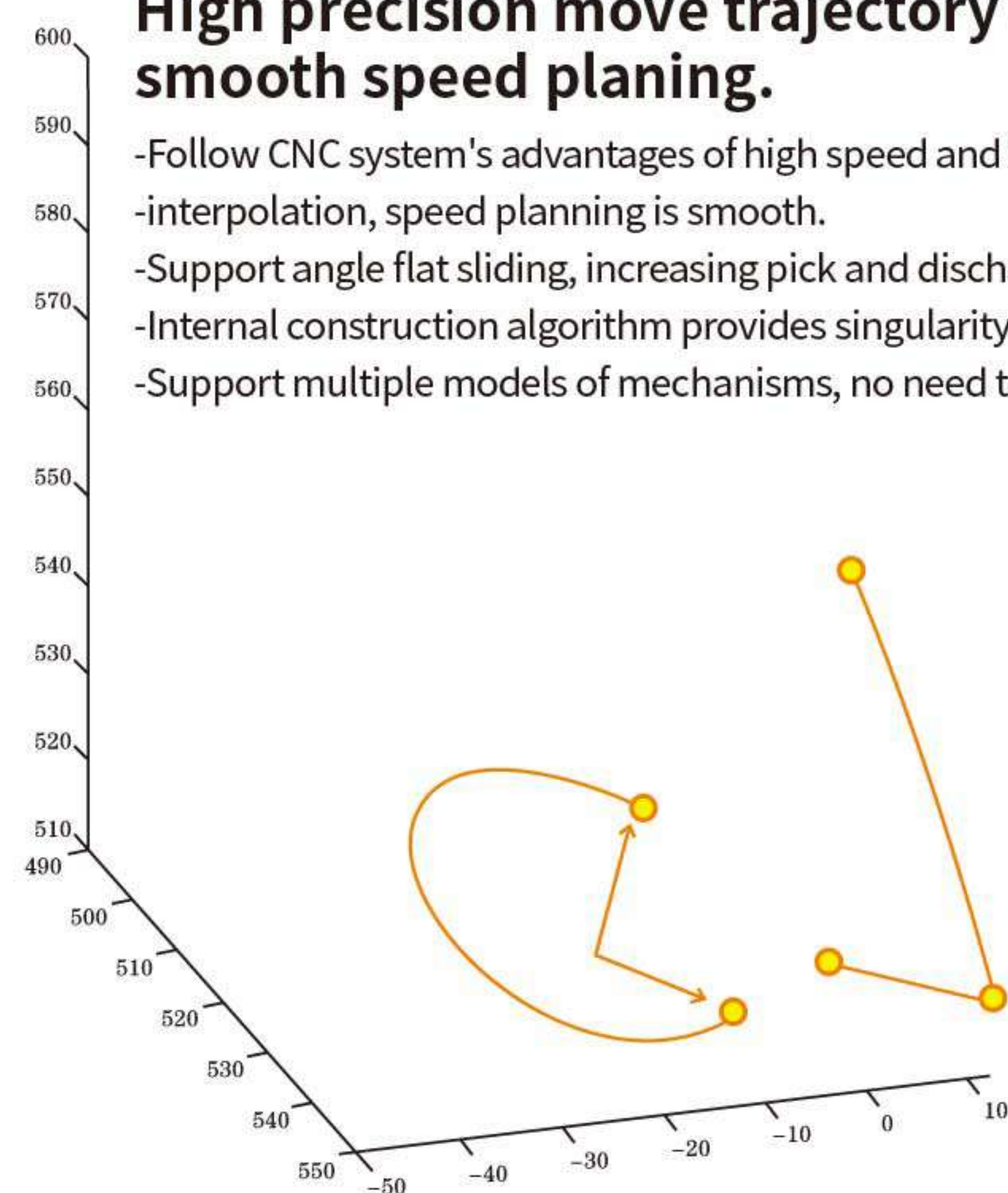
Status key

hot key,
strong manipulation

Integrated controller to handheld operator, combined with special human operation processes to be simple equipped with touch function, operations are not restricted, provide the most convenient and friendly high-end handheld controller.

High precision move trajectory and smooth speed planing.

- Follow CNC system's advantages of high speed and high precision, support path interpolation, speed planning is smooth.
- Support angle flat sliding, increasing pick and discharge's efficiency.
- Internal construction algorithm provides singularity avoidance.
- Support multiple models of mechanisms, no need to develop algorithms.



Input module



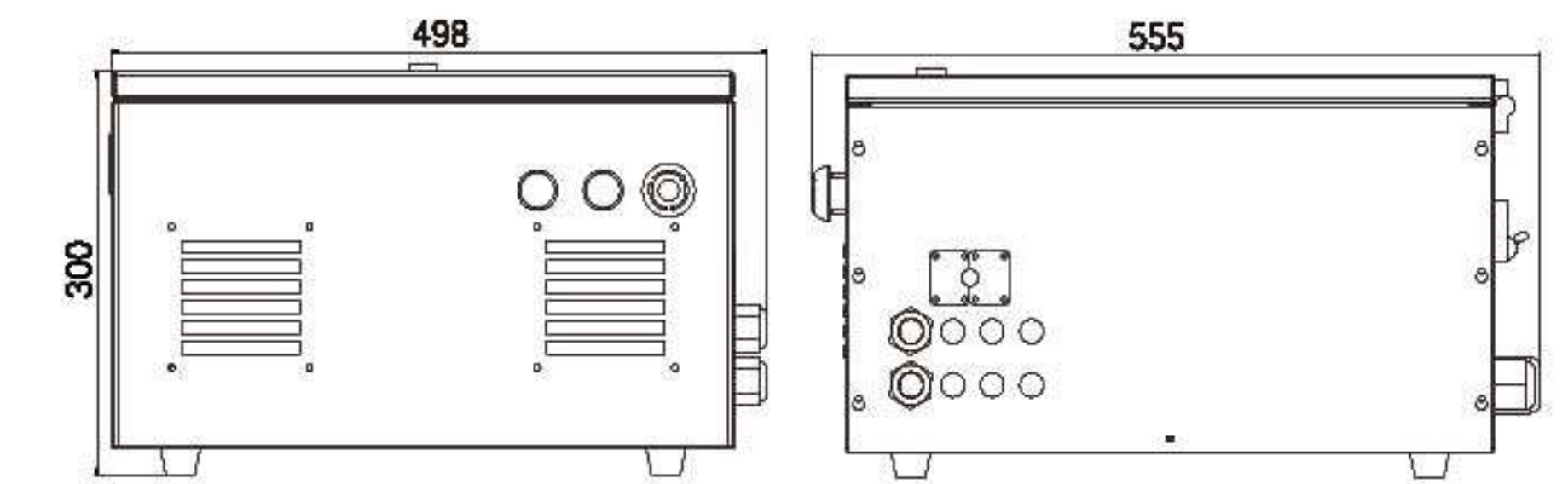
Unlimited expansion



A1 control cabinet



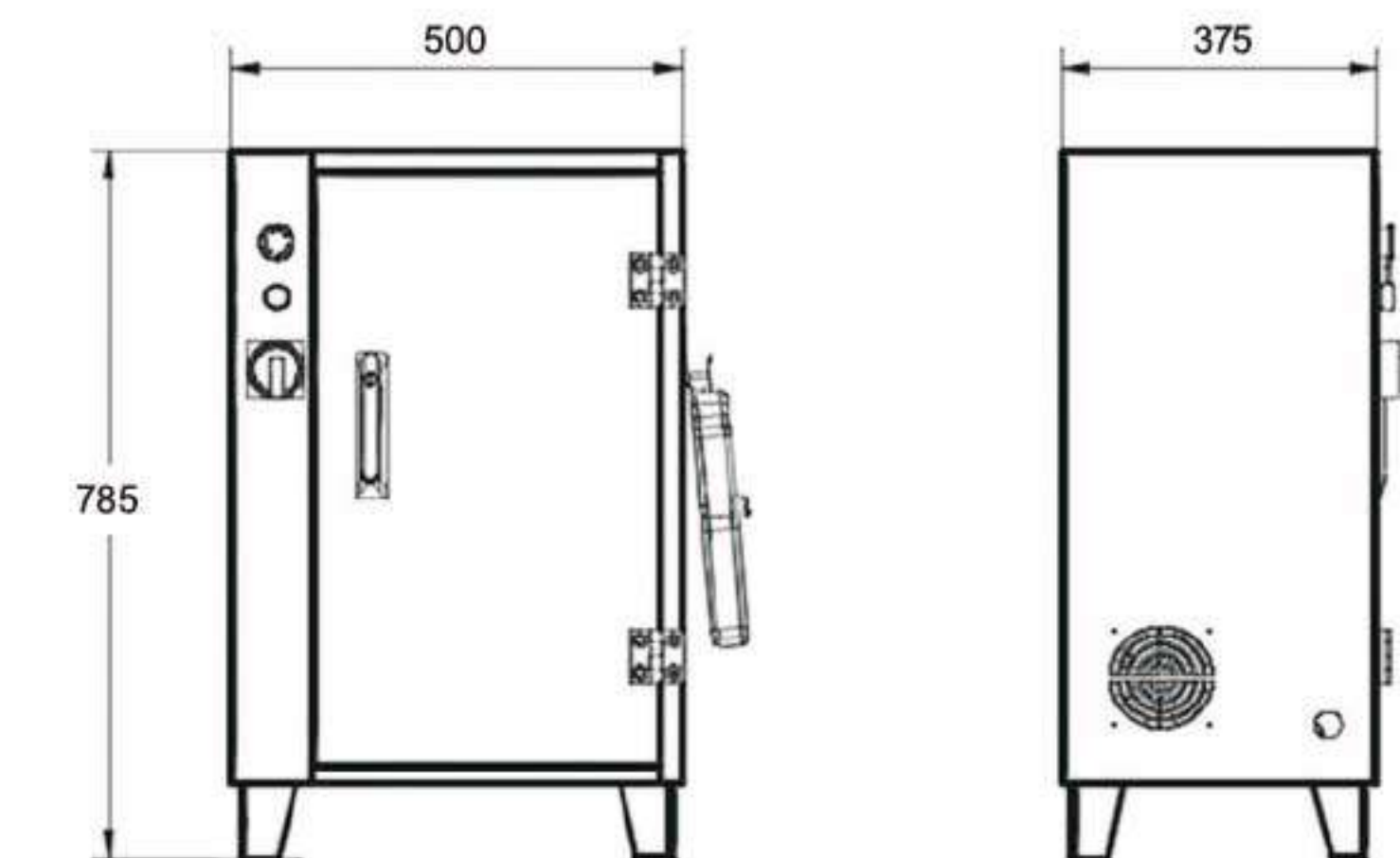
Dimension



A2 control cabinet



Dimension



Product commonality--rich options

Arc welding robot	Handling robot	Outer axis	Welding power supply
Welding software package	Welding components	Program with fillin blanket type	

Product advantages

- Continuously decrease the usage of hardware, cable and plug, improve system's reliability
- Using control system and servo driver developed and produced by Taiwan, which guarantee system's performance and reliability much better.
- Smaller case volume.
- More open system platform, convenient to secondary development.
- Adopt Yaskawa M3 Bus communication, which is reliable and fast, convenient to expand external move axis.

PRODUCT SUMMARY



CM607-L



CH1600



LJ1468



LJ1600



LJ1758



LJ2000



LJ1520C



LJ1717

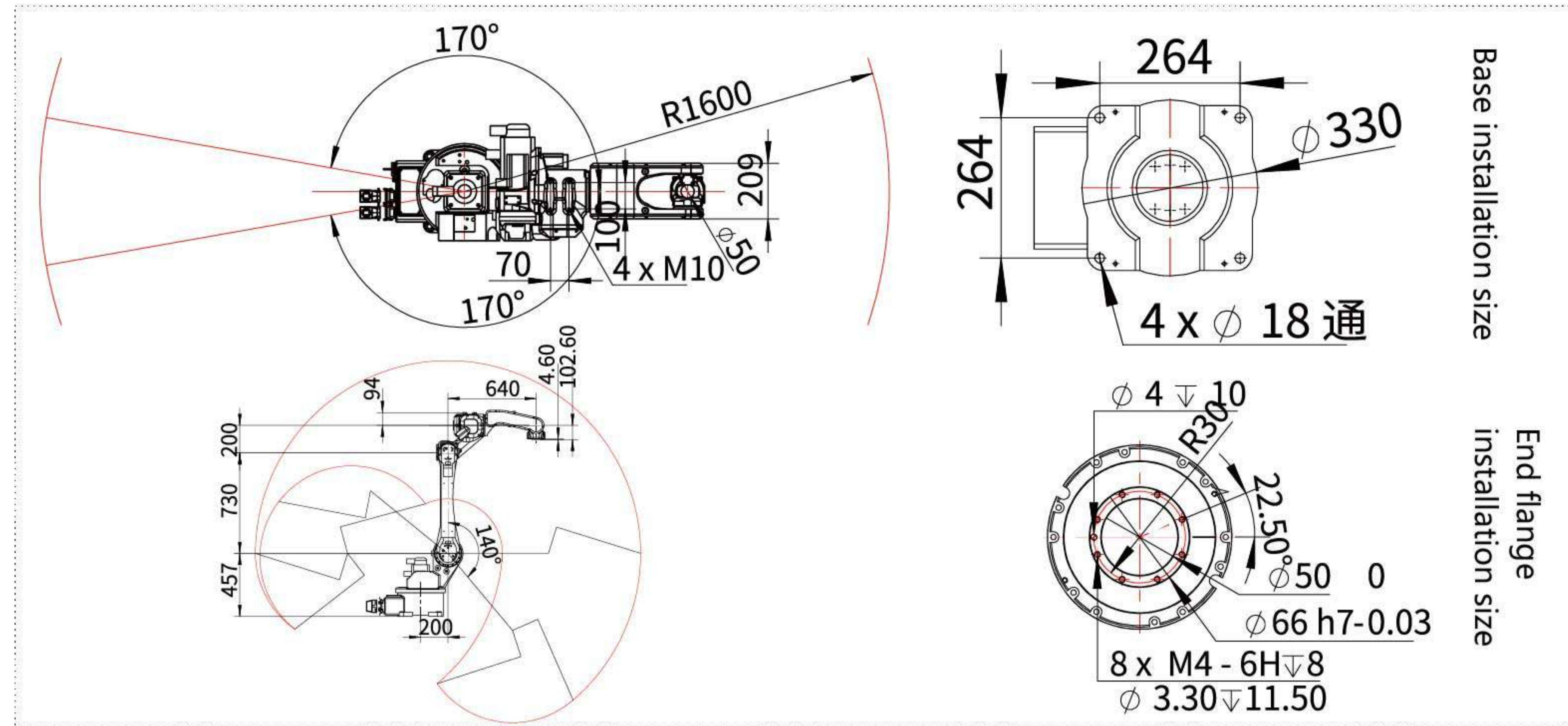


LJ2100

Naming Rule

LJ	1468	A	10	A1	W
Robot category	Reach out (mm)	No letter means 6 axis C: palletizing robot	Load (kg)	A1 cabinet: can expand to 8 axis A2 cabinet: can expand to 12 axis	No letter means standard robot W:welding suit

operating space



technical parameter

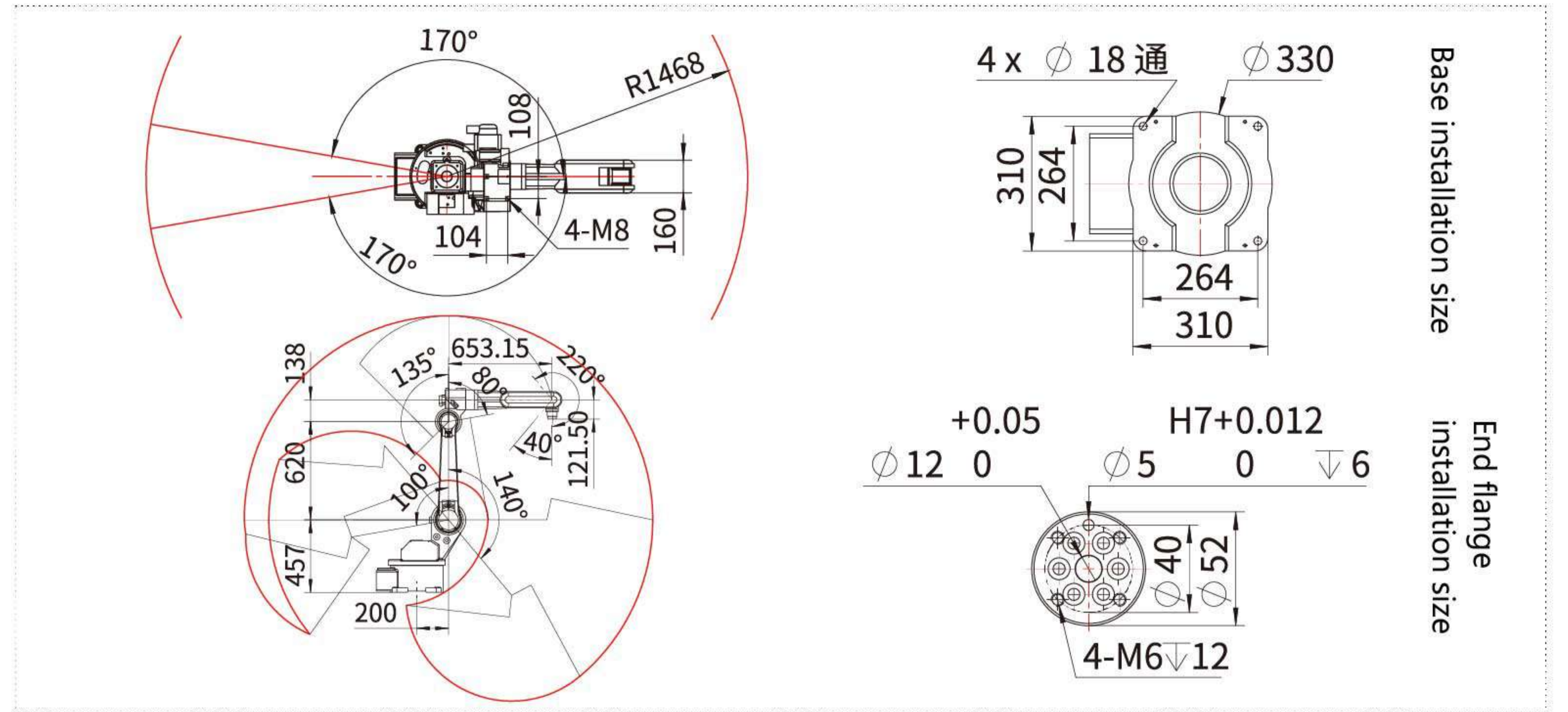
Specification and model	CH1600
Controller	6
Max Load Capacity	6
Rea (mm)	1600
Repeatability (mm)	±0.08
Motion Range (°)	
J1-axis	±170
J2-axis	+140~-90
J3-axis	+85~-135
J4-axis	±180
J5-axis	±130
J6-axis	±350
Max.Speed (°/s)	
J1-axis	148
J2-axis	148
J3-axis	247
J4-axis	385
J5-axis	444
J6-axis	600
power	
Rated voltage single phase	single phase 200~230 V 50/60 Hz
Permissible voltage range	-15%~+10%
Frequency variation range	±5%
Control cabinet	A1 model or A2 model
Mechanical Weight (kg)	240
Overloaded cable from robot to control cabinet	3m
Installation condition	Ground, reversal, side mount



Operating conditions

Environment temperature: 0-40°C
 Environment humidity: usually under 75%RH(no frosting phenomenon), under 90%in short time(within 1 month)
 Vibration acceleration: below 4.9m/s²(0.5G)
 Translation: 1. Maybe can't reach the fastest speed when move in short distance.
 2. Reversal and side mount should explain specially before order.

operating space



technical parameter

Specification and model	LJ1468-10-A
Controller	6
Max Load Capacity	10
Rea (mm)	1468
Repeatability (mm)	±0.08
Motion Range (°)	
J1-axis	±170
J2-axis	+80~-90
J3-axis	+85~-90
J4-axis	±180
J5-axis	+130~-105
J6-axis	±350
Max.Speed (°/s)	
J1-axis	190
J2-axis	140
J3-axis	140
J4-axis	220
J5-axis	150
J6-axis	320
power	
Rated voltage single phase	single phase 200~230 V 50/60 Hz
Permissible voltage range	-15%~+10%
Frequency variation range	±5%
Control cabinet	A1 model or A2 model
Mechanical Weight (kg)	161
Overloaded cable from robot to control cabinet	3m
Installation condition	Ground, reversal, side mount

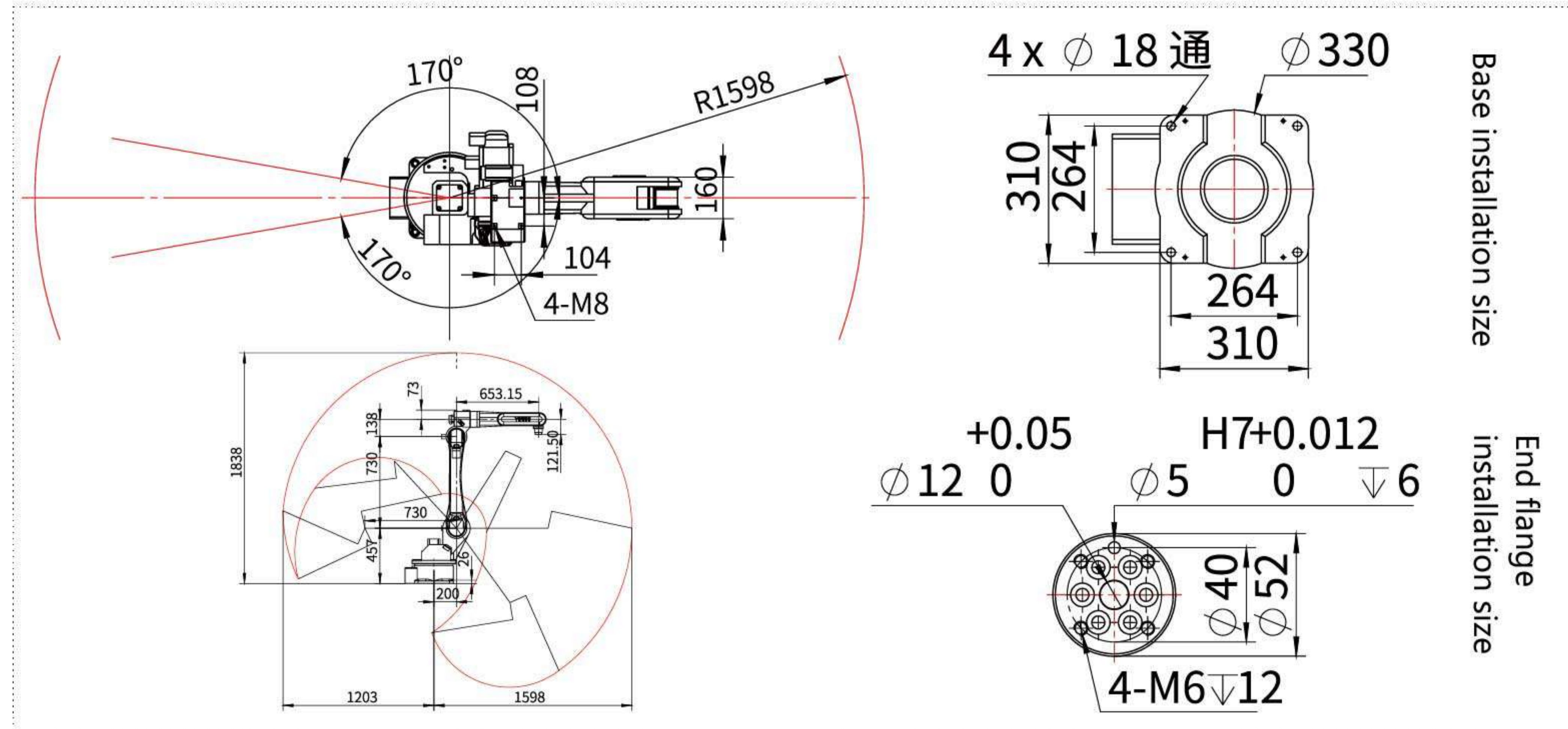


Operating conditions

Environment temperature: 0-40°C
 Environment humidity: usually under 75%RH(no frosting phenomenon), under 90%in short time(within 1 month)
 Vibration acceleration: below 4.9m/s²(0.5G)
 Translation: 1. Maybe can't reach the fastest speed when move in short distance.
 2. Reversal and side mount should explain specially before order.



⊙ operating space



⊙ technical parameter

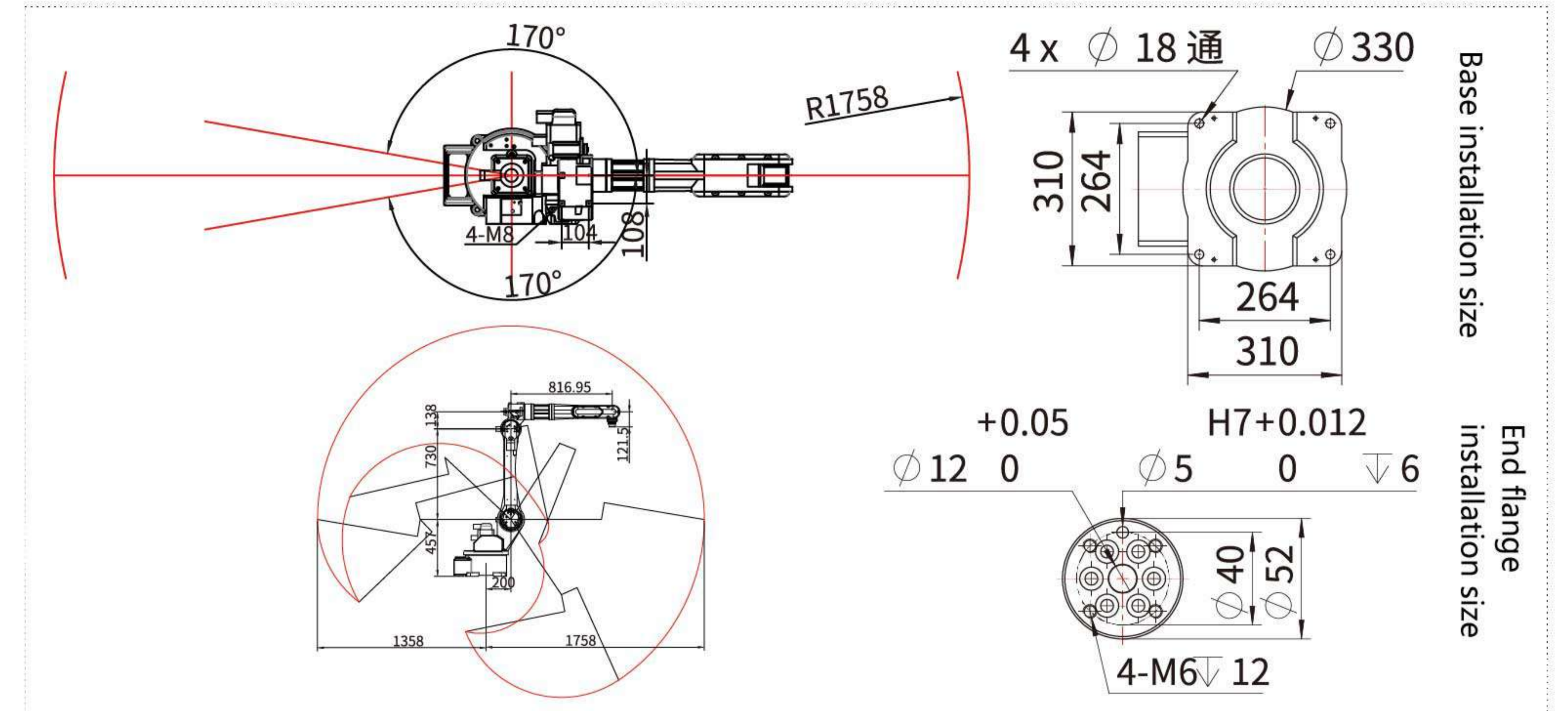
Specification and model	LJ1600-10-A
Controller	6
Carriage weight on wrist	10kg
Working radius	1600mm
Repeat positioning accuracy	± 0.08mm
Motion Range (°)	
J1-axis	± 170
J2-axis	+80~-150
J3-axis	+85~-90
J4-axis	± 180
J5-axis	+130~105
J6-axis	± 350
Max.Speed (° /s)	
J1-axis	190
J2-axis	140
J3-axis	140
J4-axis	320
J5-axis	150
J6-axis	320
power	
Rated voltage single phase	single phase 200~230 V 50/60 Hz
Permissible voltage range	-15%~+10%
Frequency variation range	± 5%
Control cabinet	A1 model or A2 model
Mechanical Weinght (kg)	268
Overloaded cable from robot to control cabinet	3m
Installation condition	Ground, reversal, side mount



Operating conditions

Environment temperature: 0-40°C
 Environment humidity: usually under 75%RH(no frosting phenomenon), under 90%in short time(within 1 month)
 Vibration acceleration: below 4.9m/s²(0.5G)
 Translation: 1. Maybe can't reach the fastest speed when move in short distance.

⊙ operating space



⊙ technical parameter

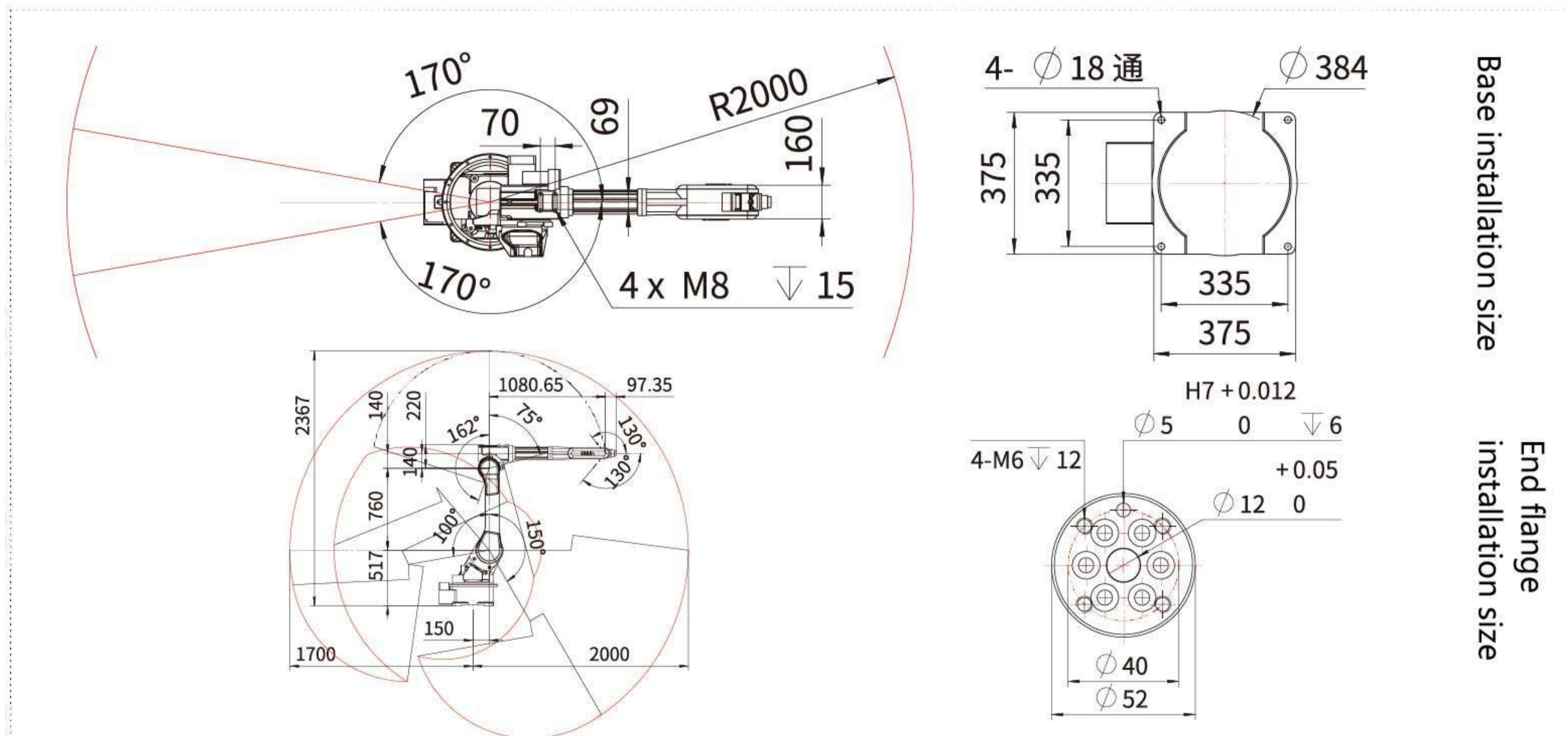
Specification and model	LJ1758-5-A
Controller	6
Carriage weight on wrist	5kg
Working radius	1758mm
Repeat positioning accuracy	± 0.08mm
Motion Range (°)	
J1-axis	± 170
J2-axis	+80~-90
J3-axis	+85~-90
J4-axis	± 180
J5-axis	+130~-105
J6-axis	± 350
Max.Speed (° /s)	
J1-axis	148
J2-axis	110
J3-axis	120
J4-axis	260
J5-axis	150
J6-axis	320
power	
Rated voltage single phase	single phase 200~230 V 50/60 Hz
Permissible voltage range	-15%~+10%
Frequency variation range	± 5%
Control cabinet	A1 model or A2 model
Mechanical Weinght (kg)	270
Overloaded cable from robot to control cabinet	3m
Installation condition	Ground, reversal, side mount



Operating conditions

Environment temperature: 0-40°C
 Environment humidity: usually under 75%RH(no frosting phenomenon), under 90%in short time(within 1 month)
 Vibration acceleration: below 4.9m/s²(0.5G)
 Translation: 1. Maybe can't reach the fastest speed when move in short distance.

⊙ operating space



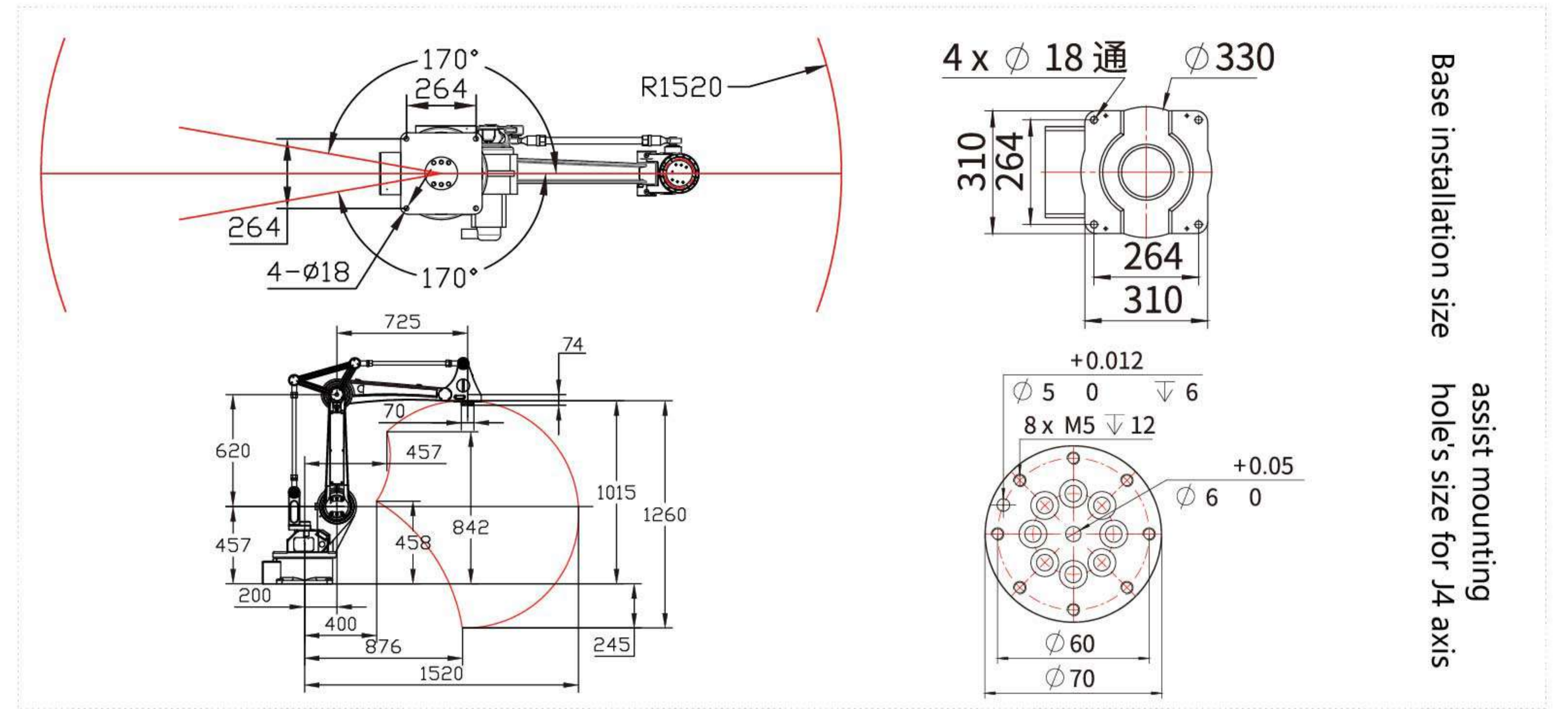
⊙ technical parameter

Specification and model	LJ2000-8-A
Controller	6
Max Lead Capacity	8
Rea (mm)	2000
Repeatability (mm)	± 0.08
Motion Range (°)	
J1-axis	± 170
J2-axis	+80~-90
J3-axis	+85~-90
J4-axis	± 180
J5-axis	+130
J6-axis	± 350
Max.Speed (° /s)	
J1-axis	148
J2-axis	110
J3-axis	140
J4-axis	200
J5-axis	150
J6-axis	320
power	
Rated voltage single phase	single phase 200~230 V 50/60 Hz
Permissible voltage range	-15% ~+10%
Frequency variation range	± 5%
Control cabinet	A1 model or A2 model
Mechanical Weight (kg)	270
Overloaded cable from robot to control cabinet	5m
Installation condition	Ground, reversal, side mount

Operating conditions

Environment temperature: 0-40°C
 Environment humidity: usually under 75%RH(no frosting phenomenon), under 90%in short time(within 1 month)
 Vibration acceleration: below 4.9m/s²(0.5G)
 Translation: 1. Maybe can't reach the fastest speed when move in short distance.
 2. Reversal and side mount should explain specially before order.

⊙ operating space



⊙ technical parameter

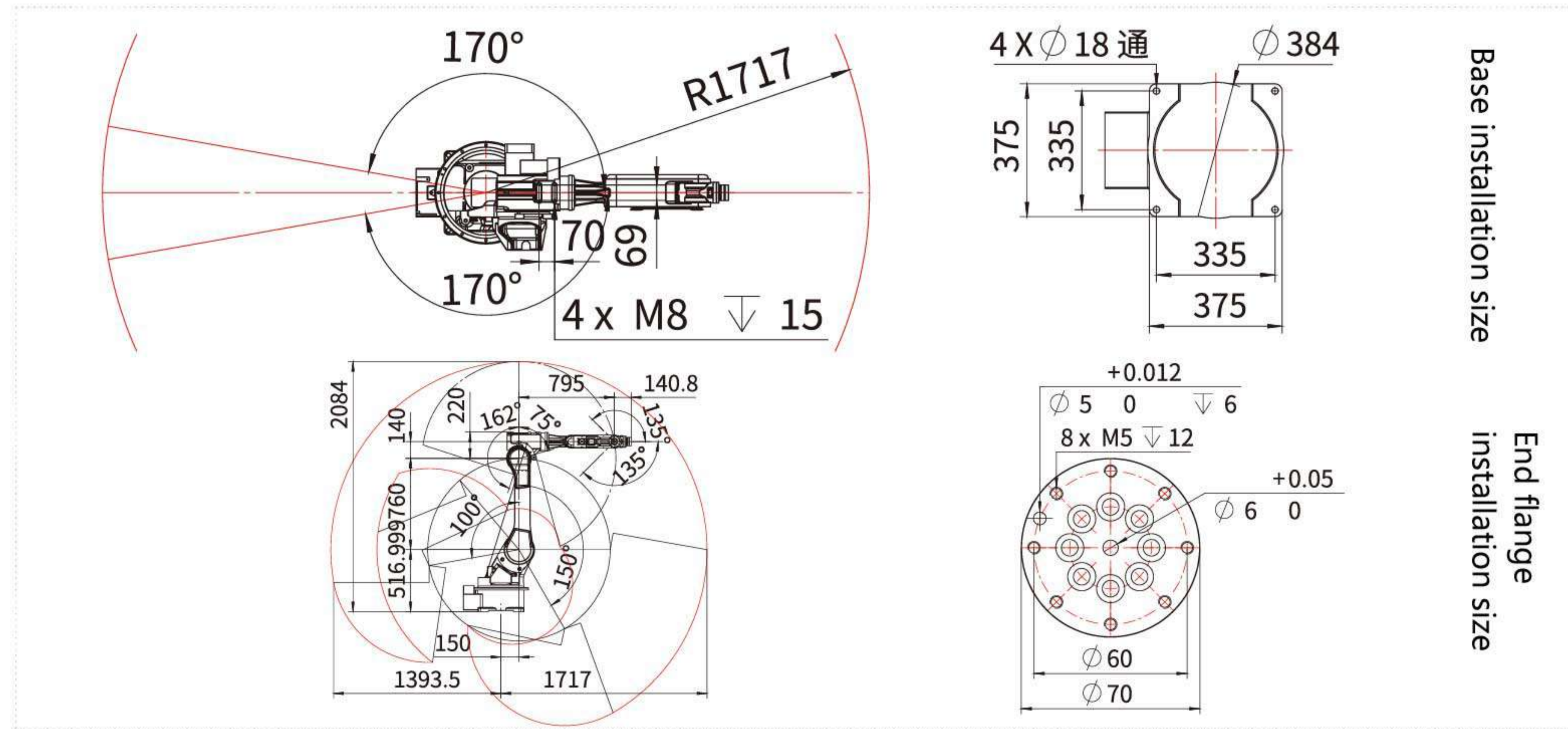
Specification and model	LJ1520C-12-A
Controller	4
Max Lead Capacity	12
Rea (mm)	1520
Repeatability (mm)	± 0.1
Motion Range (°)	
J1-axis	± 170
J2-axis	+39 -48
J3-axis	+73 -48
J4-axis	± 350
Max.Speed (° /s)	
J1-axis	195
J2-axis	140
J3-axis	140
J4-axis	230
电源 power	
Rated voltage single phase	single phase 200~230 V 50/60 Hz
Permissible voltage range	-15% ~+10%
Frequency variation range	± 5%
Control cabinet	A1 model or A2 model
Mechanical Weight (kg)	175
Overloaded cable from robot to control cabinet	3m
Installation condition	Ground



Operating conditions

Environment temperature: 0-40°C
 Environment humidity: usually under 75%RH(no frosting phenomenon), under 90%in short time(within 1 month)
 Vibration acceleration: below 4.9m/s²(0.5G)
 Translation: 1. Maybe can't reach the fastest speed when move in short distance.

operating space



technical parameter

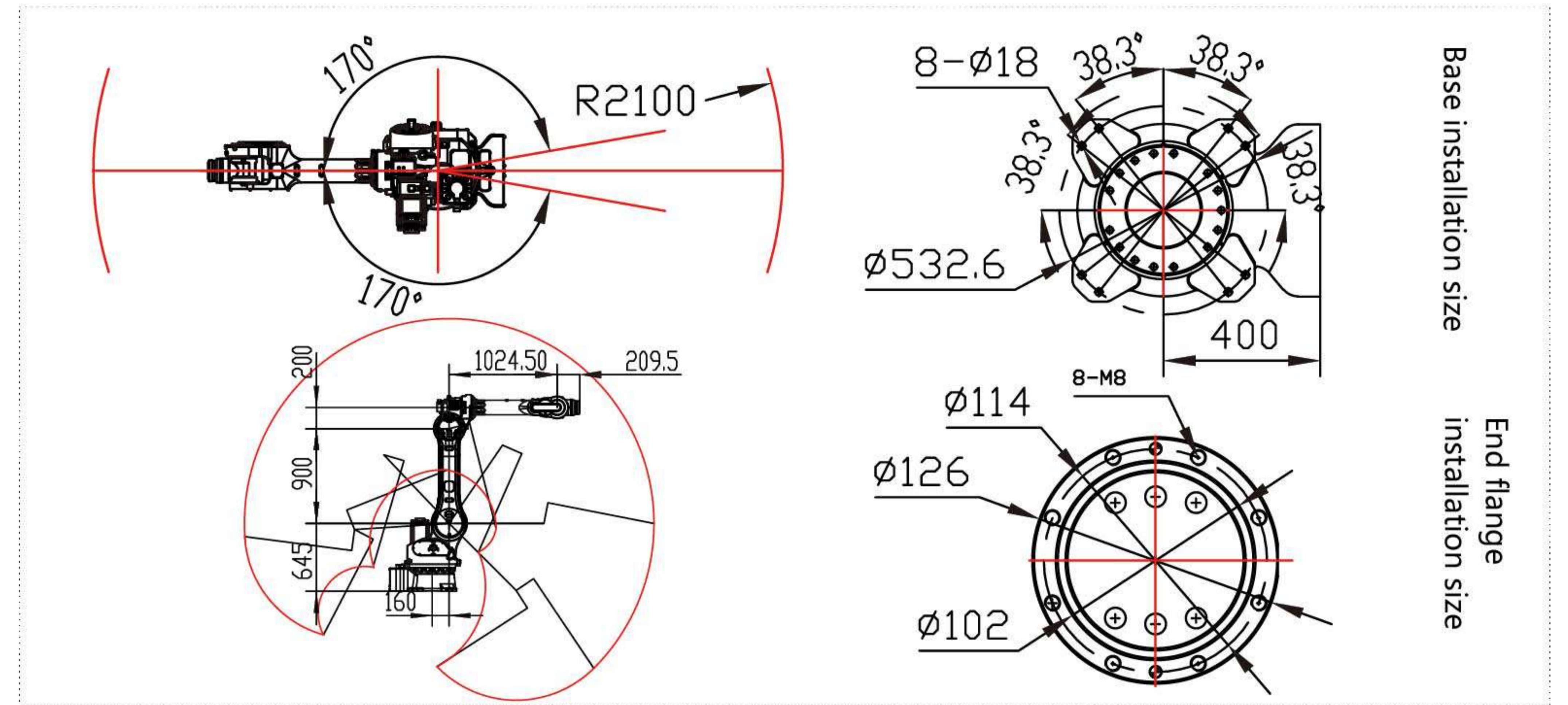
Specification and model	LJ1717-20-A
Controller	6
Max Lead Capacity	20
Rea (mm)	1717
Repeatability (mm)	± 0.08
Motion Range (°)	
J1-axis	± 170
J2-axis	+80~-90
J3-axis	+85~-90
J4-axis	± 180
J5-axis	+130~-105
J6-axis	± 350
Max.Speed (° /s)	
J1-axis	148
J2-axis	110
J3-axis	140
J4-axis	200
J5-axis	170
J6-axis	320
power	
Rated voltage single phase	single phase 200~230 V 50/60 Hz
Permissible voltage range	-15%~+10%
Frequency variation range	± 5%
Control cabinet	
Mechanical Weinght (kg)	268
Overloaded cable from robot to control cabinet	3m
Installation condition	
	Ground, reversal, side mount



Operating conditions

Environment temperature: 0-40°C
 Environment humidity: usually under 75%RH(no frosting phenomenon), under 90%in short time(within 1 month)
 Vibration acceleration: below 4.9m/s²(0.5G)
 Translation: 1. Maybe can't reach the fastest speed when move in short distance.
 2. Reversal and side mount should explain specially before order.

operating space



technical parameter

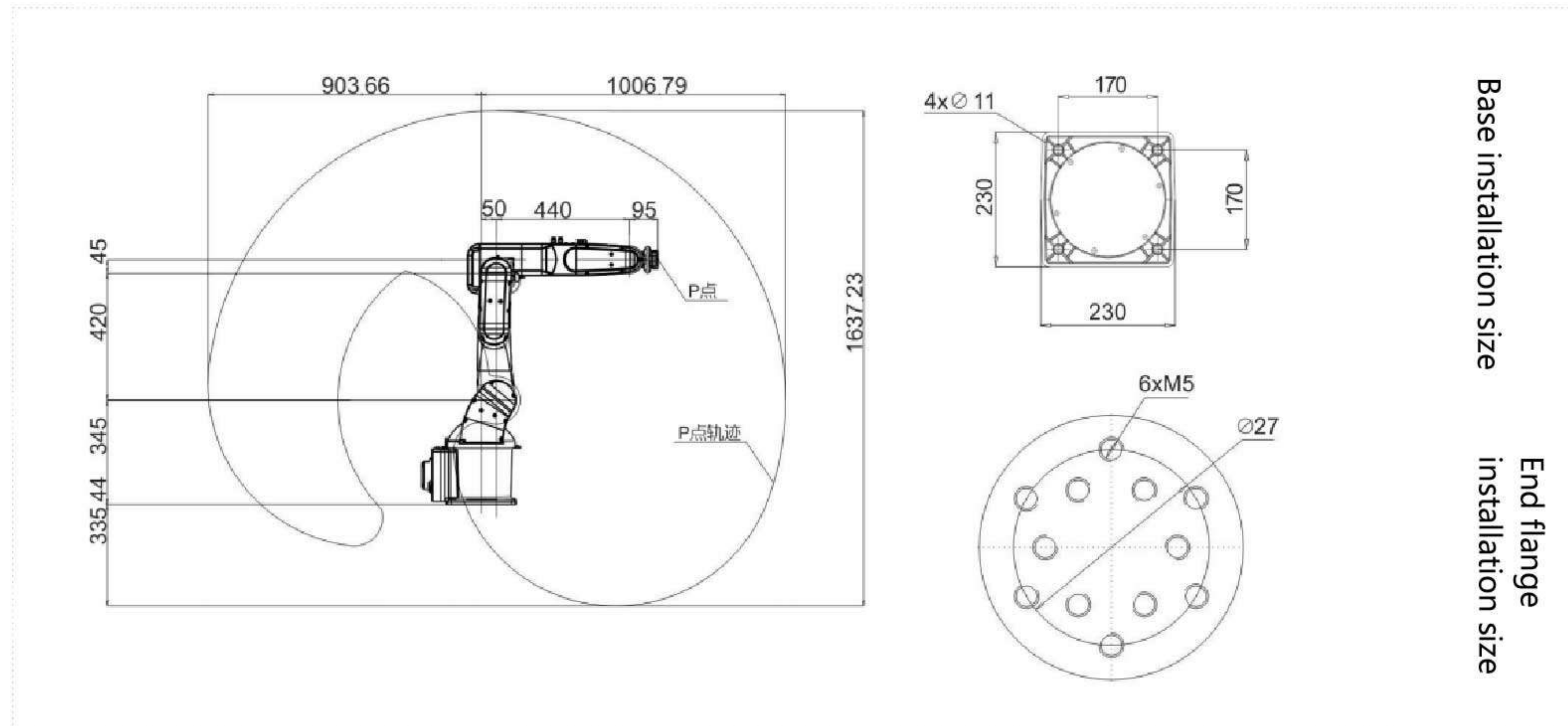
Specification and model	LJ2100-60-A
Controller	6
Max Lead Capacity	60
Rea (mm)	2100
Repeatability (mm)	± 0.08
Motion Range (°)	
J1-axis	± 160
J2-axis	-20~+175
J3-axis	-75~+135
J4-axis	± 270
J5-axis	± 120
J6-axis	± 360
Max.Speed (° /s)	
J1-axis	132
J2-axis	104
J3-axis	104
J4-axis	237
J5-axis	171
J6-axis	171
power	
Rated voltage single phase	single phase 200~230 V 50/60 Hz
Permissible voltage range	-15%~+10%
Frequency variation range	± 5%
Control cabinet	
Mechanical Weinght (kg)	A1 model or A2 model
	780KG
Overloaded cable from robot to control cabinet	5m
Installation condition	
	Ground, reversal, side mount



Operating conditions

Environment temperature: 0-40°C
 Environment humidity: usually under 75%RH(no frosting phenomenon), under 90%in short time(within 1 month)
 Vibration acceleration: below 4.9m/s²(0.5G)
 Translation: 1. Maybe can't reach the fastest speed when move in short distance.

operating space

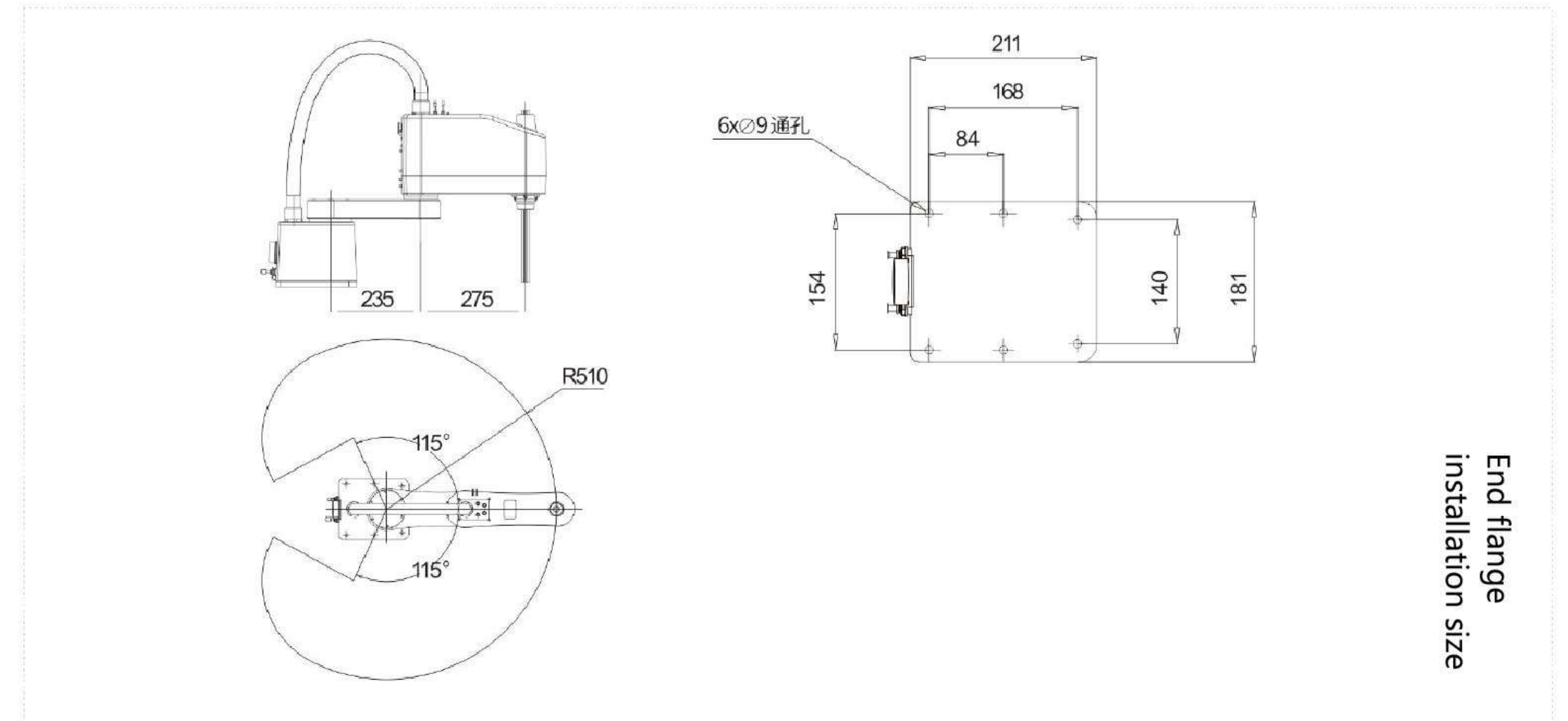


technical parameter

Structure:	Multi-joint	
Axis No:	6 axis	
Maximum load:	6 kg	
Action area:	954.5mm	
Repeatability:	±0.05mm	
Maximum range of motion	J1 Axis	±170°
	J2 Axis	+83°/-110°
	J3 Axis	+180°/-67°
	J4 Axis	±180°
	J5 Axis	±120°
	J6 Axis	±360°
Maximum movement speed:	J1 Axis	295°/S
	J2 Axis	245°/S
	J3 Axis	295°/S
	J4 Axis	365°/S
	J5 Axis	295°/S
	J6 Axis	370°/S
Power supply		
Voltage	200-230V(Single phase)50/60HZ	
Allowable range of power supply voltage	-15%~+10%	
Allowable range of frequency	±5%	
Control cabinet	A2	
Installation	Ground	
Robot weight	35kg	
Watt	1.8KW	



operating space



technical parameter

Specifications	CM403
Number of control axes:	4 axis
Maximum load:	3 kg
Action area:	510mm
Repeatability:	±0.03mm
Range of motion	
J1 Axis	±115°
J2 Axis	±150°
J3 Axis	0~155°
J4 Axis	±360°
top speed	
J1 Axis	240°/S
J2 Axis	280°/S
J3 Axis	600°/S
J4 Axis	2000°/S
Power Supply	
Voltage	200-230V(Single phase)50/60Hz
Allowable range of power supply voltage	-15%~+10%
Allowable range of frequency	±5%
Control cabinet	A1
Installation	Ground
Robot weight	14kg
Watt	1.2KW





⊙ characteristic

- New energy-saving function
A certain time later after welding, fan and heater for flowmeter will interrupt power supply automatically to save energy.
- Rich welding expansion function
Realize various art management according to clients' scene's special requirements.
- IGBT
All digital IGBT inverter control, optimal welding current waveform control for CO2/MAG arc phenomena, realizing low splash, high quality welding.
- Stainless steel welding function
The new stainless steel welding model makes the welding field more broad. Welding efficiency is improved
- Both CPVE400 and CPVE500(S-2) realize 100% load duration, improved welding efficiency.

⊙ technical parameter

Name of welding power supply	CPVE-400	CPVE-500 (S-2)
Rated input voltage、 frequency	three phase 380V ± 10%, 50/60Hz	
Rated output	400A/34V	500A/39V
Shielding gas	CO ₂ /MAG	
Applicable wire type	Solid welding wire/medical core welding wire	
wire diameter	φ 0.8, φ 0.9, φ 1.0, φ 1.2	φ 1.0, φ 1.2, φ 1.4, φ 1.6
Input Capacity	16.2kVA/15.3kW	23.0kVA/22.0kW
Output current range	30-400A	30-550A
Output voltage range	12-34V	12-41.5V
Rated load duration	100%	
Power factor	0.95	0.95
Rated no load voltage	65.7V	70.0V
Welding condition storage(memory)	30	
Insulation level	H	
Outer dimension(WxDxH)	345x550x58 (mm)	345x550x580 (mm)
Weight	50kg	55kg



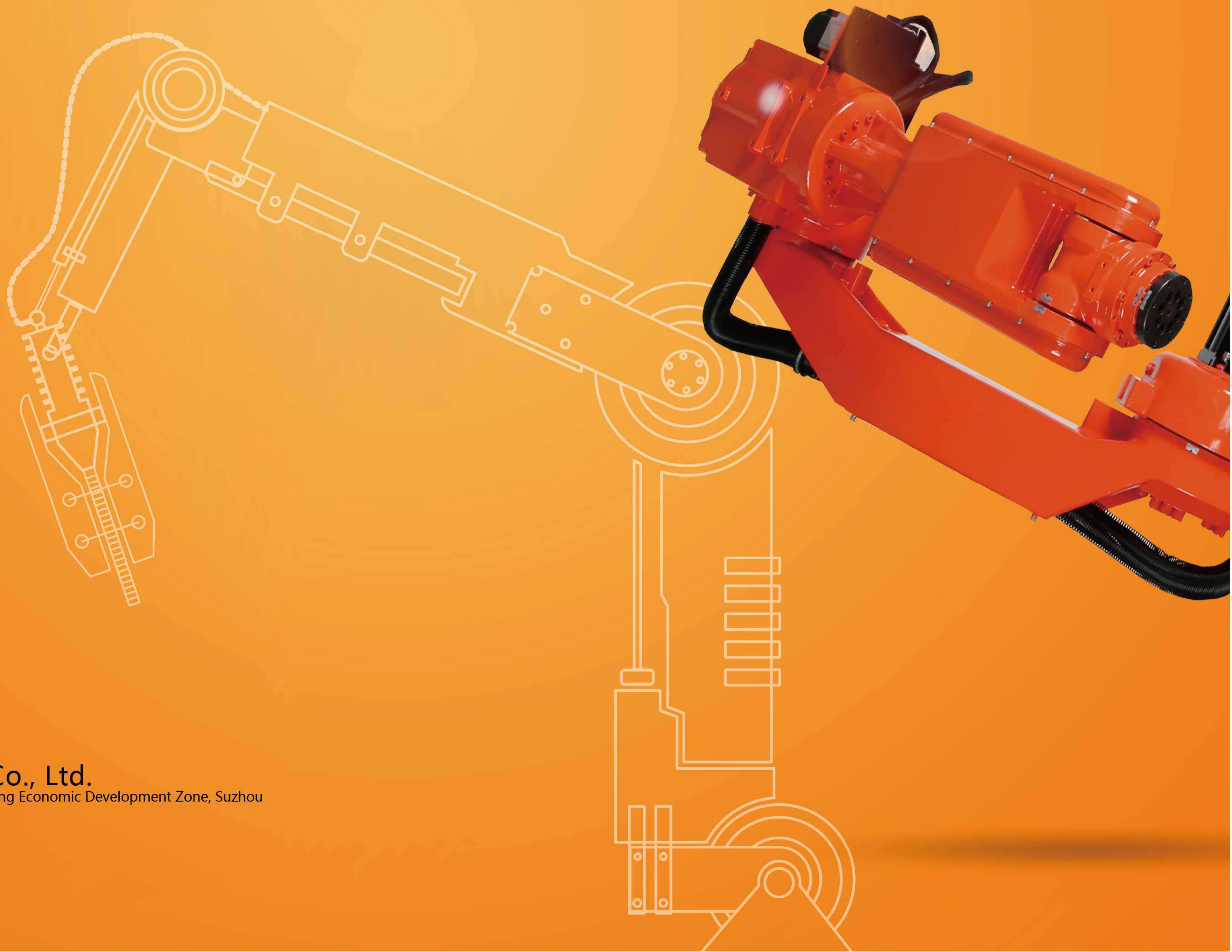
⊙ characteristic

- NBC-350/500R inverter CO2 gas protection welding machine
All digital system
- Realize precision control of excessive fusing droplets and sustainable stable welding quality
- Soft switch inverter technology
Can improve the reliability, save energy and power.
- Full digital high precision wire transmission control system
- Full digital controlled two-drive and two-follow wire transmission equipment with encoder, even external factors like power voltage, wire transmission resistance change, it still can ensure stability of wire transmission.
- Has unify/separate mode of adjustment.
- Easy to adjust, satisfy the usage of different robots and special machine.
- Arc strike, arc parameters are adjustable, welding quality is high.
- Can store more to 100 sets user customized specific parameters, easy to adjust.
Built-in expert database, suitable for different carbon steel workpiece welding

⊙ technical parameter

Model	SP-350L	NBC-500R
Rated input voltage、 frequency (V/Hz)	three phase 380±10% 50	
Rated input capacity (KVA)	14	25
Rated input current (A)	20	38
Rated output voltage (V)	31.5	39
Rated load duration (%)	60	100
Output no load voltage (V)	72	73
Output current / voltage range (A/V)	60/17~350/31.5	60/17~500/39
wire diameter (mm)	0.8、1.0、1.2、1.6	
Gas flow (L/min)	15~20	
Enclosure protection class	ip23s	
Insulation class	H	
Outer dimension(WxDxH)	66 × 32 × 56	
Weight (KG)	50	55

Remarks: There are still models like MAG-350RPL, MAG-350RL, Pulse MIG-350RP, Pulse MIG-500RP, WSM-400R, WSME-315R, LGK-120R can be purchased.



Suzhou Changmu Drive Co., Ltd.

Address : block a, Wuzhong Ginza building, Wuzhong Economic Development Zone, Suzhou
Tel&Fax : 86-0512-67236762

