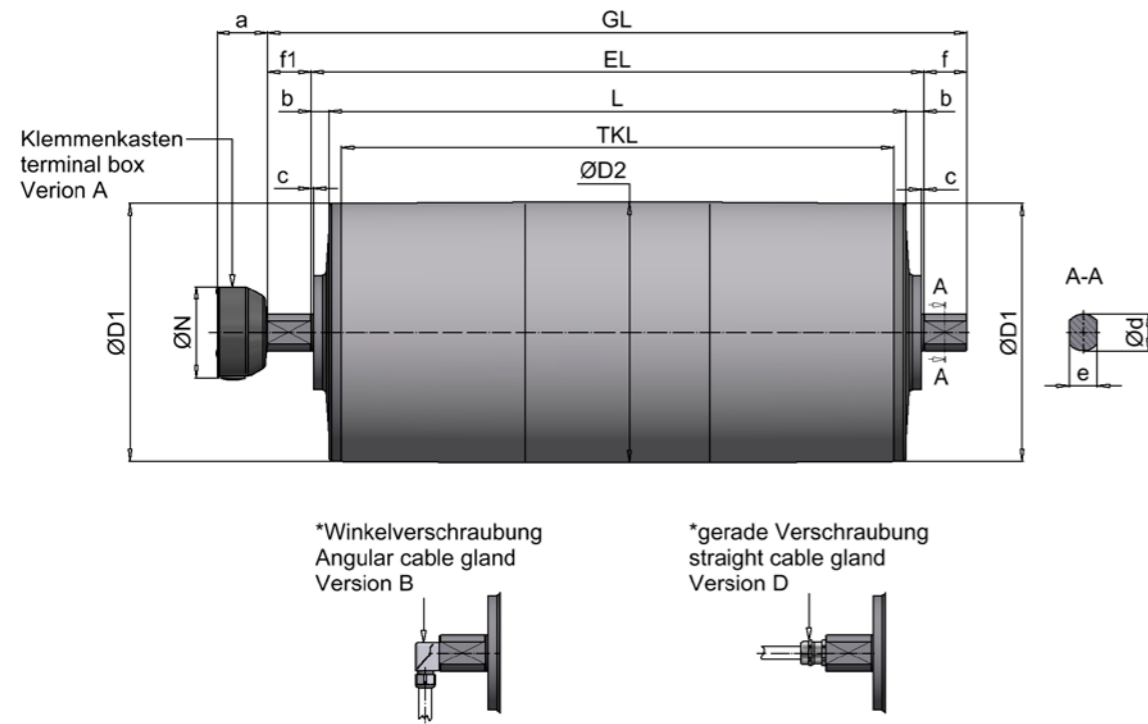


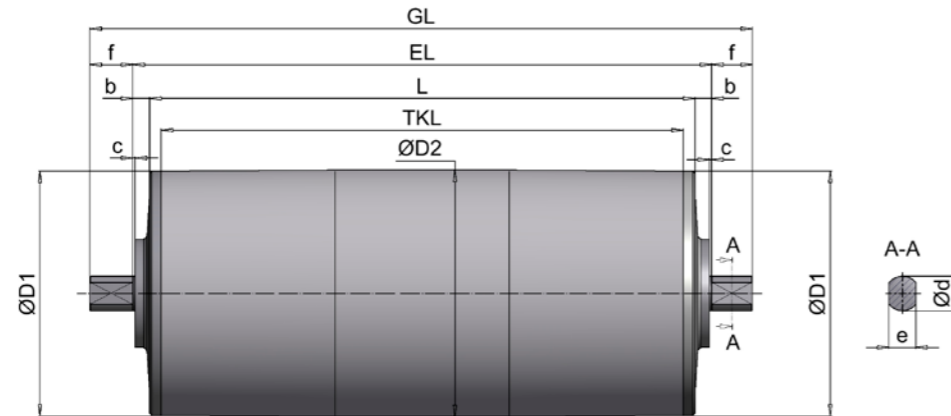
| MODEL SERIES TM321

MODEL SERIES TM321

Drum motor TM321, standard



deflection drum UT321, standard



all dimensions in mm

HIMMEL® drum motor												Standard IP66		optional IP67	
Size	Type	Ø D1	Ø D2**	a	Ø N	c	Ø d	e	f	f1	TKL	b	EL	b	EL
321	TM321.0	318	321	62	112	3	40	30	55	53	L - 30	20	L + 40	45	L + 90
321	TM321.1	318	321			3	45	35	53	51	L - 30	22	L + 44	45	L + 90
HIMMEL® deflection drum															
321	UT321.0	318	321			3	40	30	55		L - 30	20	L + 40	45	L + 90
321	UT321.1	318	321			3	45	35	53		L - 30	22	L + 44	45	L + 90

* with 3 m cable

** Diameter with cylindrical drum body

MODEL SERIES TM321

Overview of services type TM321.0-TM321.1

Type	Performance	Speed	Rotational speed	Belt tension	Drum torque	Power consumption at 400 V / 50 Hz	Drum length L min.	Weight
	P2	v	n2	F	T2			
	[kW]	[m/s]	[1/min]	[N]	[Nm]	[A]	[mm]	[kg]
TM321.0	1,50 4-pole	0,48	29	3098	497	3,20	520	95
		0,56	33	2702	434			
		0,71	42	2109	338			
		0,89	53	1685	270			
		1,11	66	1356	218			
		1,27	76	1177	189			
		1,74	104	861	138			
		2,00	119	751	120			
2,34	139	641	103					
TM321.1	2,20 4-pole	0,39	23	5622	902	4,80	550	120
0,48		28	4593	737				
0,70		42	3148	505				
0,87		52	2516	404				
1,09		65	2025	325				
1,25		75	1756	282				
1,71		102	1285	206				
1,96		117	1121	180				
2,30	137	957	154					
TM321.1	3,00 4-pole	0,60	36	4986	800	6,60	550	125
0,74		44	4070	653				
0,84		50	3564	572				
1,09		65	2751	442				
1,26		75	2387	383				
1,72		102	1746	280				
1,97		117	1523	244				
TM321.0								
TM321.1	4,00 4-pole	0,73	44	5465	877	9,00	550	130
1,08		64	3694	593				
1,33		79	3019	484				
1,66		99	2411	387				
2,03		121	1968	316				
TM321.1	5,50 4-pole	1,04	62	5282	848	11,50	680	140
1,28		76	4312	692				
1,65		98	3324	533				
2,04		121	2697	433				
2,68		159	2054	330				
3,28	195	1677	269					
TM321.1	7,50 4-pole	1,65	98	4532	727	15,50	680	150
2,04		121	3678	590				
2,68		159	2801	450				
3,28		195	2287	367				

- Deviating performance data and speeds on request
- Weight incl. oil filling (ready for operation)
- Additional weight: approx. 6 kg for 100 mm additional length
- The L min. dimension increases by 130 mm when the brakes are fitted

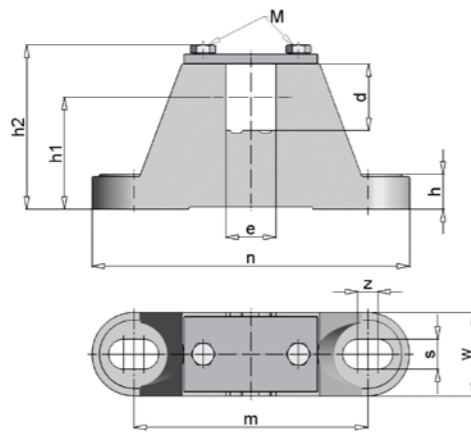
Standard widths [L] : 520, 550, 600, 680 ... 1600 mm from 1600 mm reinforced version.

MODEL SERIES TM321

Execution types and options

Standardausführung	Optionen
<ul style="list-style-type: none"> Spherically turned steel jacket, bright steel, coated with rust protection IP66 Bearing end cover made of gray cast iron, painted to RAL 7031 Clamping spigot made of steel, coated with rust protection Spur gearbox with steel gearing (low-noise) Terminal box 	<ul style="list-style-type: none"> Internal brake Elbow fitting (with 3 m cable) Straight screw connection (incl. 3 m cable) Backstop (ball bearing freewheel) Sprocket/toothed belt pulley Cylindrical drum body, rubberized, galvanized (customized) Stainless steel version Thermal contacts IP67 Suitable for frequency inverter operation Terminal box design in stainless steel Vertical installation possible (specify when ordering) Food oil <p>Other versions available on request.</p>

Clamping bearing for HIMMEL® drum motor / HIMMEL® deflection drum type 321



all dimensions in mm

Drum type	Clamping bearing	d	e	h	h1	h2	m	n	s	w	z	M	Material	approx. kg
TM/UT321.0	EL40/30 B	40	30	21	67	102,5	140	190	18	50	12	M8	Cast iron	2,8
TM/UT321.1	EL45/35	45	35	21	67	105	140	190	18	50	12	M8		2,8

Color of the clamping bearings in RAL 7031

MODEL SERIES TM321



Drum motors in a screening machine



Drum motors in a screening machine