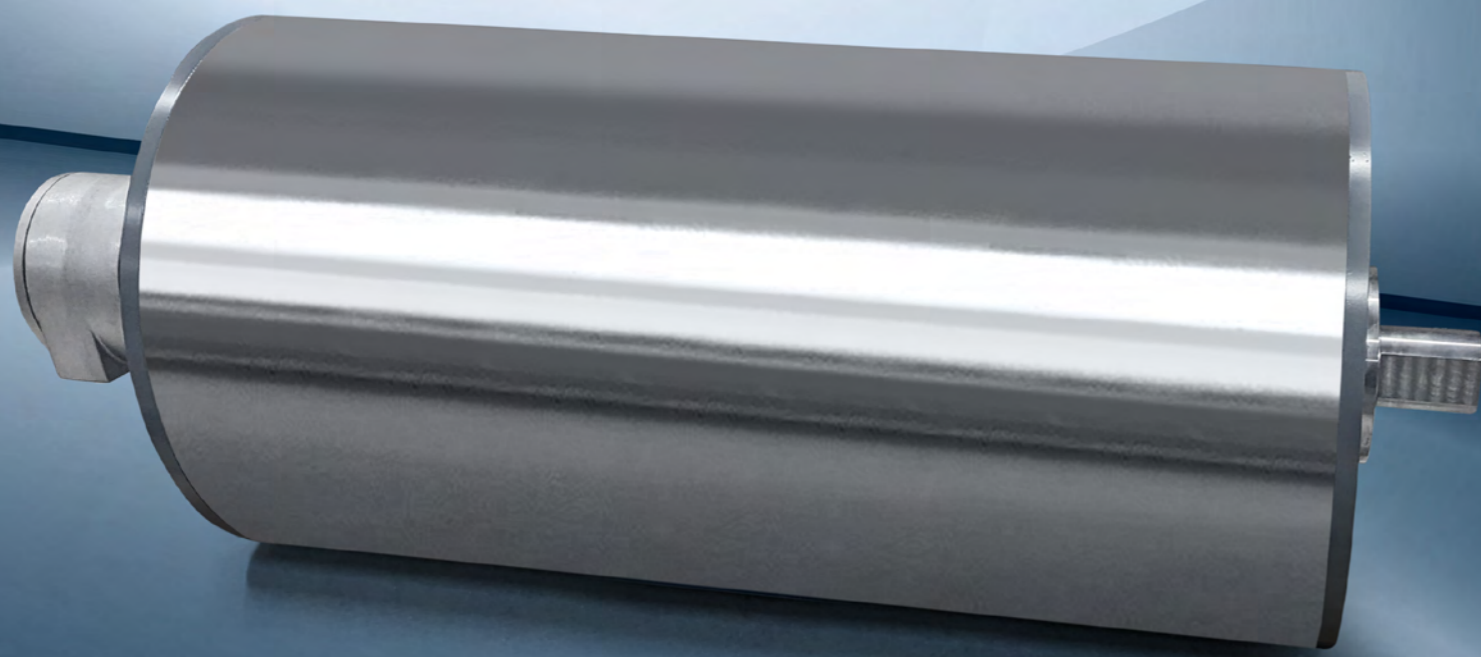
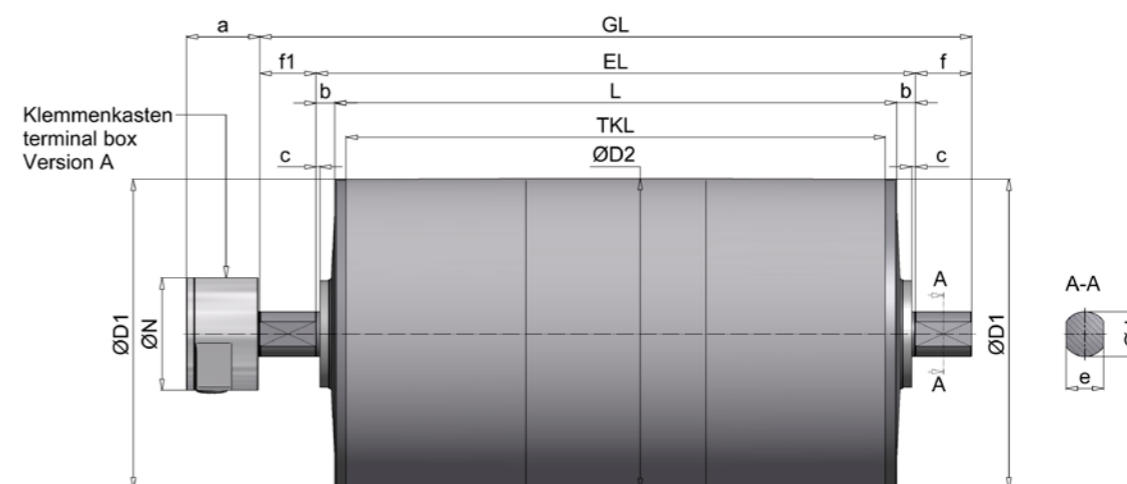


MODEL SERIES TM415

Drum motor TM415, default



deflection drum UT415, standard



all dimensions in mm

HIMMEL [®] drum motor												Standard IP66		optional IP67	
Size	Type	Ø D1	Ø D2*	a	Ø N	c	Ød	e	f	f1	TKL	b	EL	b	EL
415	TM415.0	413	415	62	112	3	45	35	53	51	L - 30	22	L + 44	32	L + 64
415	TM415.1	413	415	100	150	5	60	50	75	75	L - 30	25	L + 50	35	L + 70
HIMMEL [®] deflection drum															
415	UT415.0	413	415			3	45	35	53		L - 30	22	L + 44	32	L + 64
415	UT415.1	413	415			5	60	50	75		L - 30	25	L + 50	35	L + 70

* Diameter with cylindrical drum body

MODEL SERIES TM415

Overview of services type TM415.0-TM415.1

Type	Performance	Speed	Rotational speed	Belt tension	Drum torque	Power consumption at 400 V / 50 Hz	Drum length L min.	Weight
	P2	v	n2	F	T2			L=750 mm
	[kW]	[m/s]	[1/min]	[N]	[Nm]			[kg]
TM415.0	3,00 4-pole	0,78	36	3857	800	3,20	550	160
		0,95	44	3148	653			
		1,32	61	2276	472			
		1,61	74	1858	386			
TM415.1	4,00 4-pole	0,60	28	6678	1386	9,00	750	275
0,84		39	4746	985	550		170	
0,95		44	4227	877				
1,31		60	3056	634				
1,60		74	2495	518				
2,08		96	1923	399				
TM415.1	5,50 4-pole	0,87	40	6344	1316	11,50	750	290
		1,04	48	5267	1093			
		1,29	59	4266	885			
		1,56	72	3530	733			
		1,72	79	3201	664			
		2,17	100	2534	526			
TM415.1	7,50 4-pole	1,04	48	7182	1490	15,50	750	300
		1,29	59	5818	1207			
		1,56	72	4814	999			
		1,72	79	4365	906			
		2,17	100	3456	717			
TM415.1	10,00 4-pole	1,28	59	7811	1621	21,00	750	320
		1,55	71	6464	1341			
		1,71	79	5861	1216			
		2,16	99	4640	963			
TM415.1	15,00 4-pole	1,71	79	8792	1824	29,50	750	360
		2,16	99	6959	1444			

- Deviating performance data and speeds on request
- Weight incl. oil filling (ready for operation)
- Additional weight: approx. 10 kg per 100 mm additional length
- The L min. dimension increases by 200 mm for brake attachment

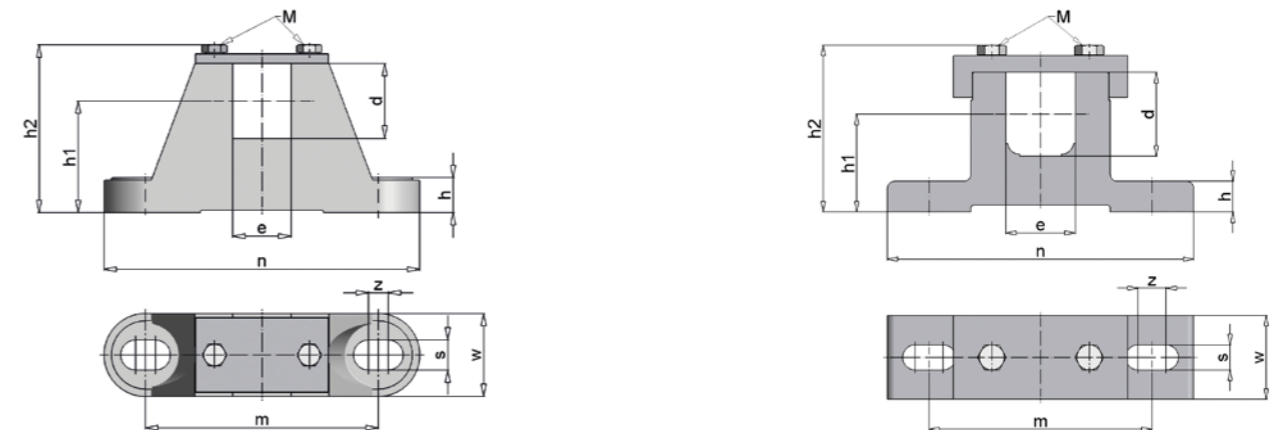
Standard widths [L] : 550, 600, 650 ... 1400 mm from 1400 mm reinforced version.

MODEL SERIES TM415

Execution types and options

Standard version	Options
<ul style="list-style-type: none"> • Spherically turned steel jacket, bright steel, coated with rust protection • IP66 • Bearing end cover made of gray cast iron, painted to RAL 7031 • Clamping spigot made of steel, coated with rust protection • Spur gearbox with steel gearing (low-noise) • Terminal box 	<ul style="list-style-type: none"> • Internal brake • Backstop (ball bearing freewheel) • Sprocket/toothed belt pulley • Cylindrical drum body, rubberized, galvanized (customized) • Stainless steel version • Thermal contacts • IP67 • Suitable for frequency inverter operation • Terminal box design in stainless steel • Vertical installation possible (specify when ordering) • Food oil <p>Other versions available on request.</p>

Clamping bearing for HIMMEL®-drum motor / HIMMEL® deflection drum type 415



all dimensions in mm

Drum type	Clamping bearing	d	e	h	h1	h2	m	n	s	w	z	M	Material	approx. kg
TM/UT415.0	EL45/35	45	35	21	67	105	140	190	18	50	12	M8	Cast iron	2,8
TM/UT415.1	EL60/50	60	50	22	70	119,5	160	220	18	60	20	M12	Steel	5

Color of the clamping bearings in RAL 7031