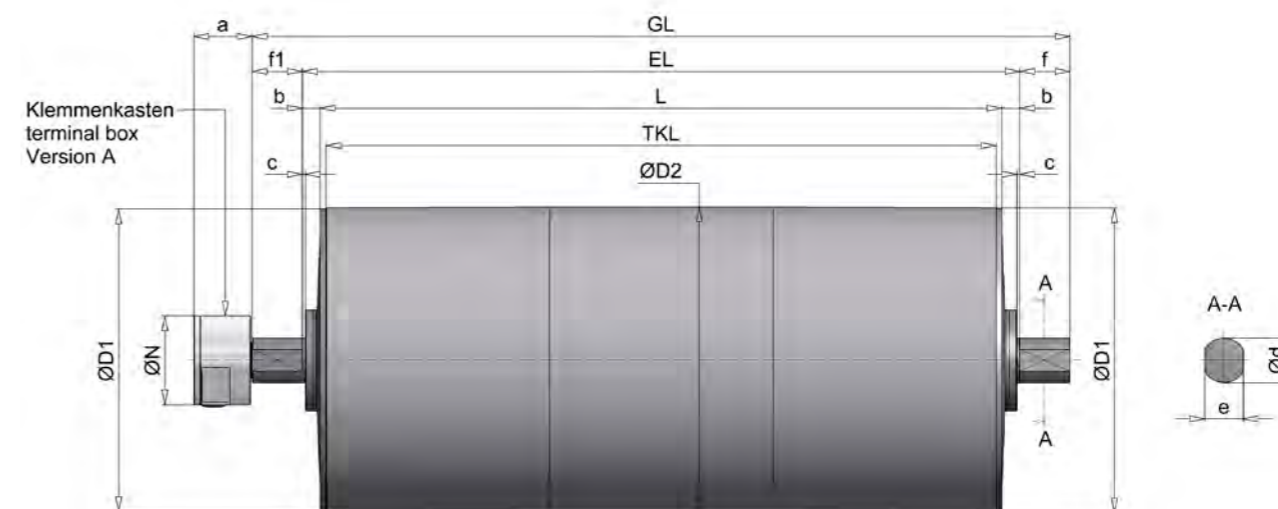
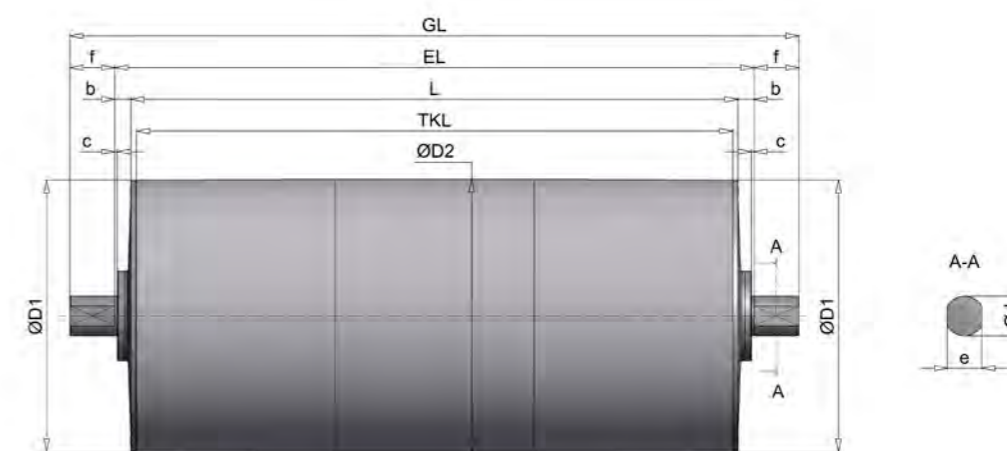


## MODEL SERIES TM518

### Drum motor TM518, standard



### deflection drum UT518, standard



all dimensions in mm

HIMMEL <sup>®</sup> drum motor												optional IP65	Standard IP66	optional IP67			
Size	Type	Ø D1	Ø D2*	a	Ø N	c	Ø d	e	f	f1	TKL	b	EL	b	EL	b	EL
518	TM518.0	515	518	100	150	5	60	50	75	75	L - 20			25	L + 50	35	L + 70
518	TM518.1	515	518			5	75	65	85	85	L - 20	30	L + 60	45	L + 90	60	L + 120
HIMMEL <sup>®</sup> deflection drum																	
518	UT518.0	515	518			5	60	50	75		L - 20			25	L + 50	35	L + 70
518	UT518.1	515	518			5	75	65	85		L - 20	30	L + 60	45	L + 90	60	L + 120

\* Diameter with cylindrical drum body

# MODEL SERIES TM518

## Overview of services type TM518.0-TM518.1

Type	Performance	Speed	Rotational speed	Belt tension	Drum torque	Power consumption at 400 V / 50 Hz	Drum length L min.	Weight
	P2	v	n2	F	T2			L=950 mm
	[kW]	[m/s]	[1/min]	[N]	[Nm]			[kg]
TM518.1	4,00 4-pole	0,51 0,63	19 23	7813 6396	2024 1657	9,00	750	350
TM518.1	5,50 4-pole	0,53	19	10445	2705			
TM518.0		0,64	24	8551	2215			
		0,84	31	6545	1695			
		1,08	40	5083	1316			
		1,30	48	4219	1093			
1,61	59	3418	885					
TM518.1	7,50 4-pole	0,64	24	11660	3020	15,50	820	375
TM518.0		0,84	31	8924	2311			
		1,07	39	7012	1816			
		1,31	48	5740	1487			
		1,55	57	4845	1255			
		1,61	59	4661	1207			
1,94	72	3857	999					
2,14	79	3497	906					
TM518.1	10,00 4-pole	0,83	31	11982	3103	21,00	820	462
TM518.0		1,06	39	9415	2438			
		1,30	48	7707	1996			
		1,54	57	6506	1685			
		1,7	63	5899	1528			
		2,08	77	4817	1248			
TM518.1	15,00 4-pole	1,31	48	11480	2973	29,50	800	448
TM518.0		1,55	57	9691	2510			
		1,71	63	8787	2276			
		2,09	77	7176	1859			
TM518.1	18,50 4-pole	1,59	58	11668	3022	37,00	850	470
TM518.0		1,75	64	10580	2740			
		2,14	79	8640	2238			
TM518.1	22,00 4-pole	1,75	64	12582	3259	43,50	850	470
TM518.0		2,14	79	10275	2661			

- Deviating performance data and speeds on request
- Weight incl. oil filling (ready for operation)
- Additional weight: approx. 10 kg per 100 mm additional length
- The L min. dimension increases by 200 mm for brake attachment

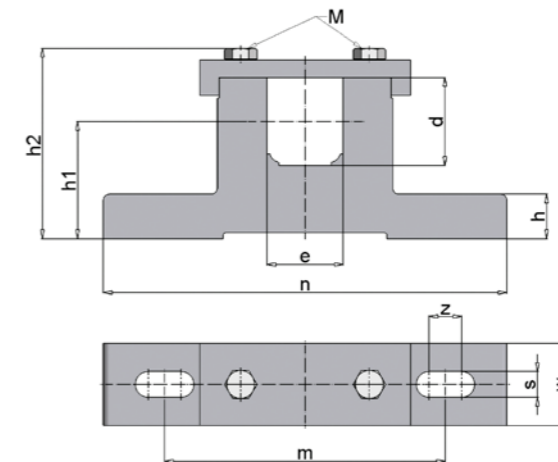
Standard widths [L] : 750, 800, 820, 850 ... 1600 mm from 1600 mm reinforced version.

# MODEL SERIES TM518

## Execution types and options

Standard version	Options
<ul style="list-style-type: none"> <li>• Spherically turned steel jacket, bright steel, coated with rust protection</li> <li>• IP66</li> <li>• Bearing end cover made of gray cast iron, painted to RAL 7031</li> <li>• Clamping spigot made of steel, coated with rust protection</li> <li>• Spur gearbox with steel gearing (low-noise)</li> <li>• Terminal box</li> </ul>	<ul style="list-style-type: none"> <li>• Internal brake</li> <li>• Backstop (ball bearing freewheel)</li> <li>• Sprocket/toothed belt pulley</li> <li>• Cylindrical drum body, rubberized, galvanized (customized)</li> <li>• Stainless steel version</li> <li>• Thermal contacts</li> <li>• IP65 with (TM/UT518.1)</li> <li>• IP67</li> <li>• Suitable for frequency inverter operation</li> <li>• Terminal box design in stainless steel</li> <li>• Vertical installation possible (specify when ordering)</li> <li>• Food oil</li> </ul> <p>Other versions available on request.</p>

## Clamping bearing for HIMMEL® drum motor / HIMMEL® deflection drum type 518



all dimensions in mm

Drum type	Clamping bearing	d	e	h	h1	h2	m	n	s	w	z	M	Material	approx. kg
TM/UT518.0	EL60/50	60	50	22	70	119,5	160	2220	18	60	20	M12	Cast iron	5
TM/UT518.1	EL75/65	75	65	38	100	162,5	240	345	22	70	28	M16	Steel	13,5

Color of the clamping bearings in RAL 7031