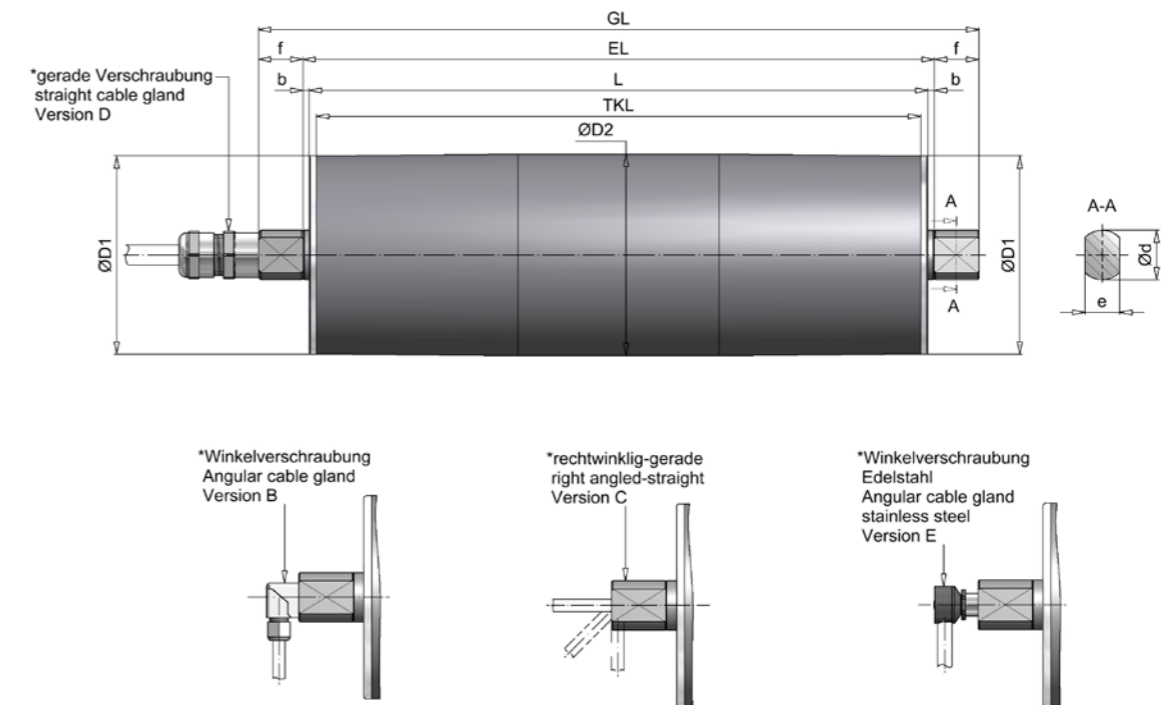
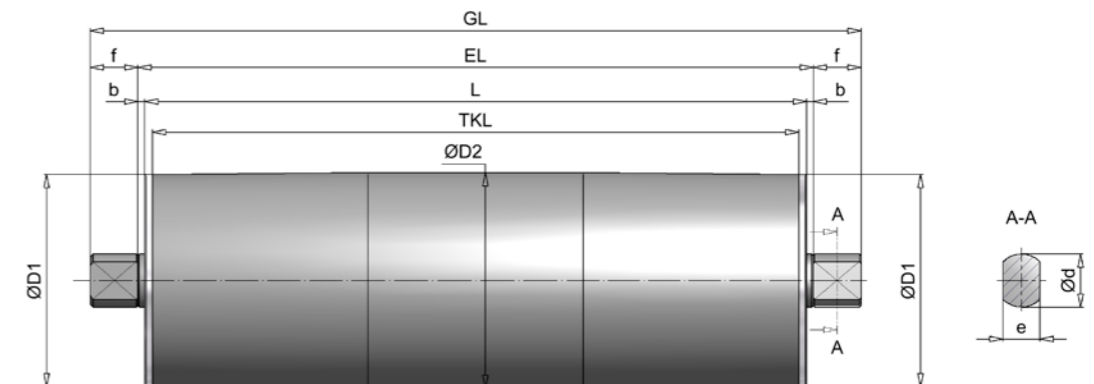


## MODEL SERIES TM60.1

### Drum motor TM60, standard



### deflection drum UT60, standard



all dimensions in mm

HIMMEL <sup>®</sup> drum motor			Standard IP65							
Size	Material	Type	$\text{Ø D1}$	$\text{Ø D2}$	$\text{Ø d}$	e	f	TKL	b	EL
60	Steel	TM60.1	61,5	62,5	20	14	18	L - 6	2,5	L + 5
	Stainless steel		63,5	64,5						
HIMMEL <sup>®</sup> deflection drum										
60	Steel	UT60.1	61,5	62,5	20	14	18	L - 6	2,5	L + 5
	Stainless steel		63,5	64,5						

\* with 3 m cable

Diameter for cylindrical drum body: steel  $\text{ø}$  62.5; stainless steel  $\text{ø}$  64

## MODEL SERIES TM60

# MODEL SERIES TM60

## Overview of services

Type	Performance	Speed	Rotational speed	Belt tension	Drum torque	Power consumption at 400 V / 50 Hz	Drum length L min.	Weight
	P2	v	n2	F	T2			L=450 mm
	[kW]	[m/s]	[1/min]	[N]	[Nm]			[A]
TM60.1	0,03 4-pole	0,09	26	345	11	0,19	355 with IP65 365 with IP66	6
		0,11	34	265	8			
		0,14	41	219	7			
		0,15	45	204	6			
		0,18	54	168	5			
		0,22	65	139	4			
		0,59	178	51	2			
		0,76	232	39	1			
0,92	280	32	1					
TM60.1	0,08 2-pole	0,18	54	447	14	0,24	355 with IP65 365 with IP66	6
		0,23	71	343	11			
		0,28	85	284	9			
		0,30	92	264	8			
		0,37	111	218	7			
		0,44	134	180	6			
		1,21	366	66	2			
		1,57	477	51	2			
		1,90	576	42	1			

- Different performance data and speeds on request
- Weight incl. oil filling (ready for operation)
- Additional weight: approx. 0.5 kg per 100 mm additional length

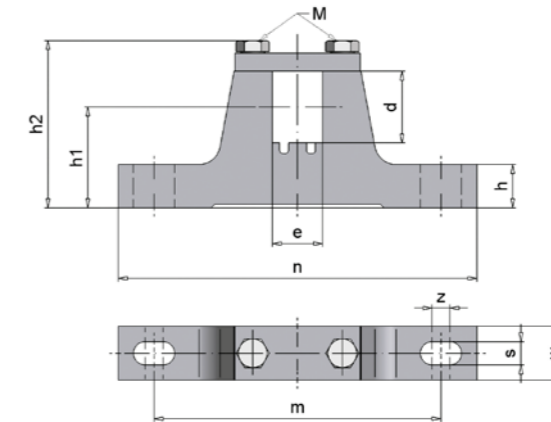
Standard widths [L] : 355, 365, 400, 450 ... 800 mm, from 800 mm reinforced version

# MODEL SERIES TM60

## Execution types and options

Standard version	Options
<ul style="list-style-type: none"> <li>• spherically turned steel jacket, bright steel, coated with rust protection</li> <li>• IP65</li> <li>• Aluminum bearing end caps</li> <li>• Clamping spigot made of steel, coated with rust protection</li> <li>• Planetary gearbox with steel gearing</li> <li>• Straight screw connection (incl. 3 m cable)</li> </ul>	<ul style="list-style-type: none"> <li>• Elbow fitting (with 3 m cable)</li> <li>• Stainless steel elbow fitting (with 3 m cable)</li> <li>• Right-angled straight screw connection (with 3 m cable)</li> <li>• Sprocket/toothed belt pulley</li> <li>• Cylindrical drum body, galvanized (customer-specific)</li> <li>• Stainless steel version</li> <li>• IP66</li> <li>• Suitable for frequency inverter operation</li> <li>• for plastic modular belts</li> <li>• Vertical installation possible</li> <li>• Food oil</li> <li>• HIMMEL® drum motor as built-in cartridge</li> <li>• Single-phase alternating current motors on request</li> <li>• cCSAus</li> </ul> <p>Other versions available on request.</p>

## Clamping bearing for HIMMEL® drum motor / HIMMEL® deflection drum type 60

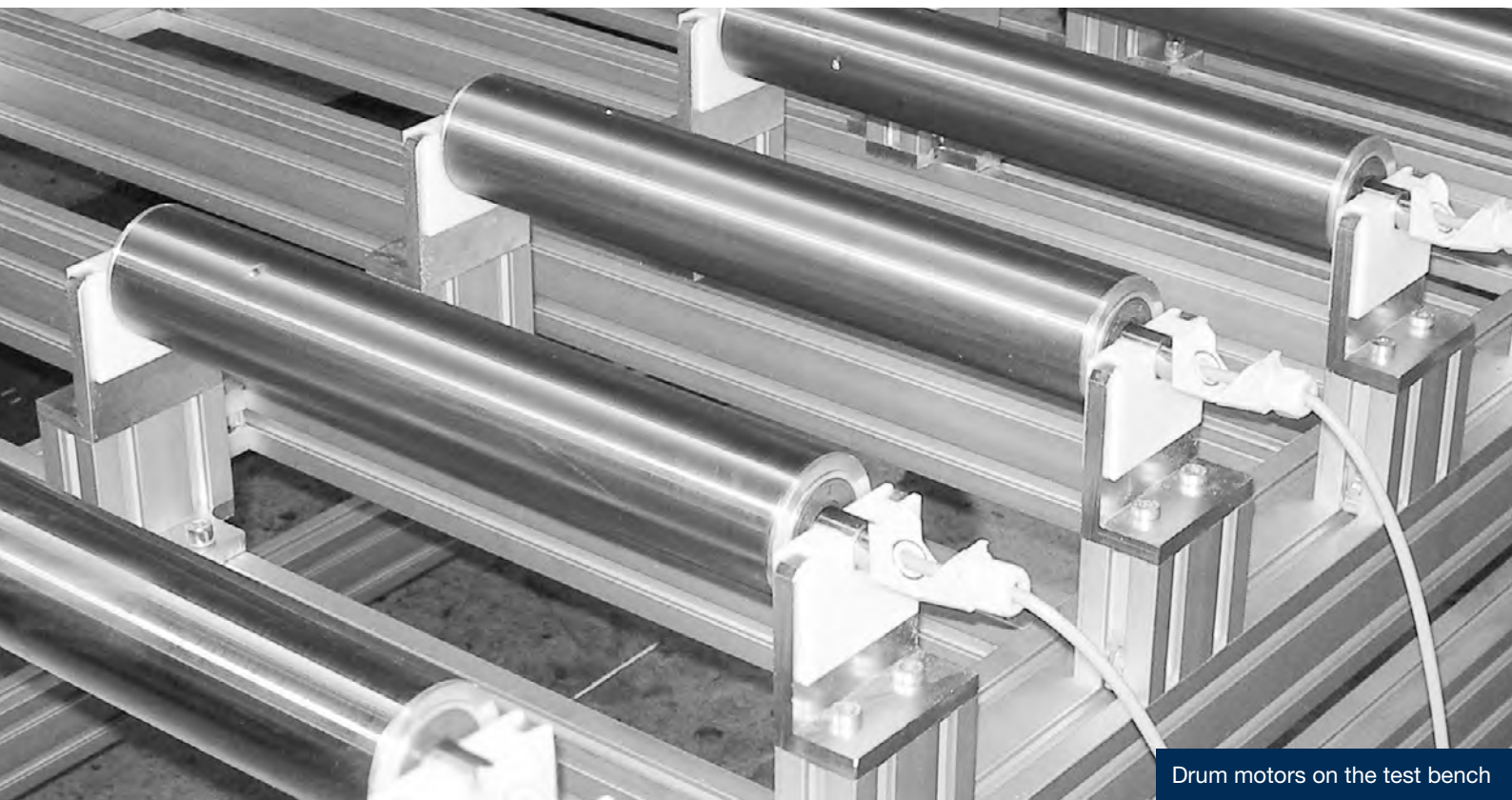


all dimensions in mm

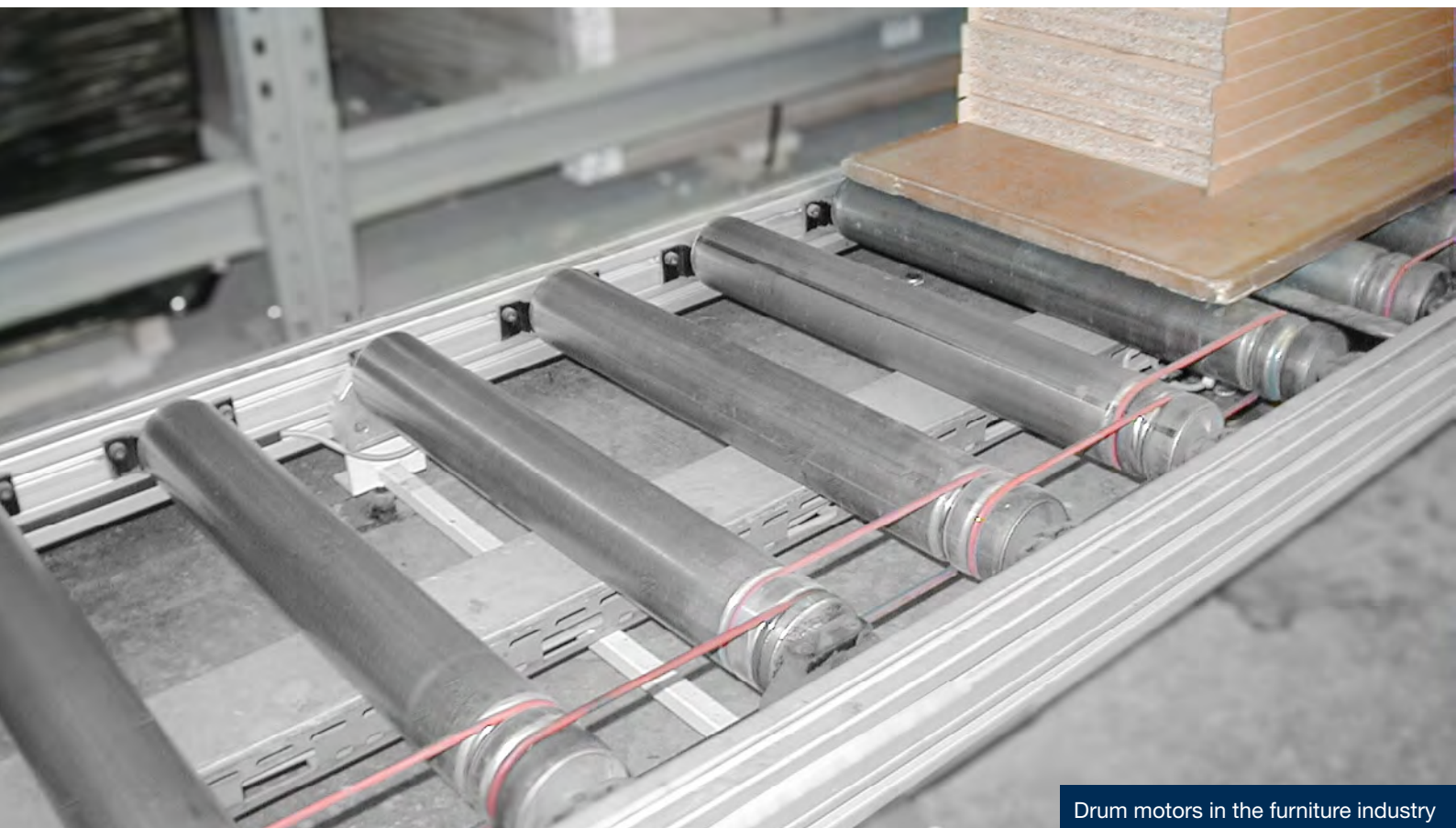
Drum type	Clamping bearing	d	e	h	h1	h2	m	n	s	w	z	M	Material	approx. kg
TM/UT60.1	EL20/14	20	14	12	28	47	80	100	6,5	15	5	M5	Steel	0,25

Color of the clamping bearings in RAL 7031

# MODEL SERIES TM60



Drum motors on the test bench



Drum motors in the furniture industry