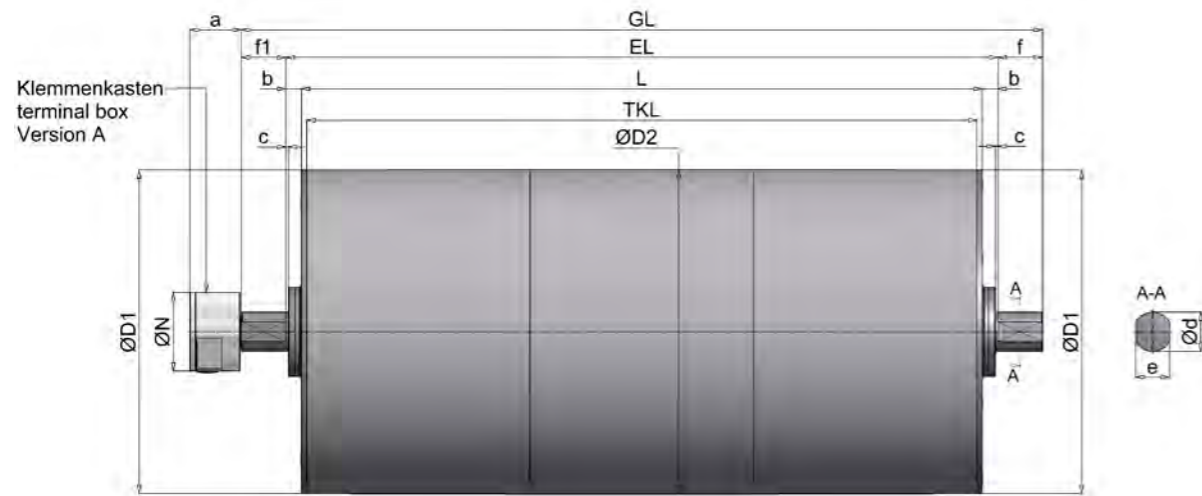


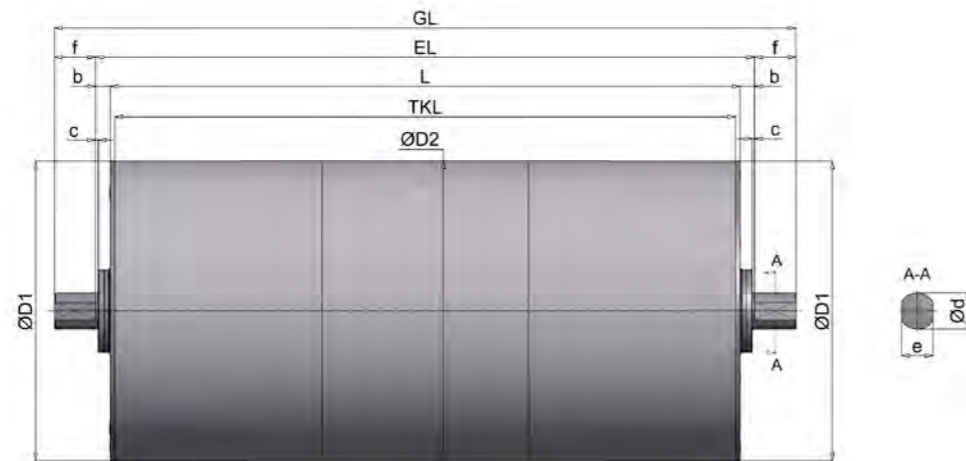
| MODEL SERIES TM620

MODEL SERIES TM620

Drum motor TM620, standard



deflection drum UT620, standard



all dimensions in mm

HIMMEL® drum motor												Standard IP65	optional IP66	optional IP67			
Size	Type	Ø D1	Ø D2*	a	Ø N	c	Ø d	e	f	f1	TKL	b	EL	b	EL	b	EL
620	TM620.0	618	620	100	150	5	75	65	85	85	L - 20	30	L + 60	45	L + 90	60	L + 120
HIMMEL® deflection drum																	
620	UT620.0	618	820			5	75	65	85		L - 20	30	L + 60	45	L + 90	60	L + 120

* Diameter with cylindrical drum body

MODEL SERIES TM620

Overview of services type TM620.0

Type	Performance	Speed	Rotational speed	Belt tension	Drum torque	Power consumption at 400 V / 50 Hz	Drum length L min.	Weight
	[kW]	[m/s]	[1/min]	[N]	[Nm]			[A]
TM620.0	7,50 4-pole	0,77	24	9742	3020	15,50	820	520
		1,01	31	7456	2311			
		1,28	39	5858	1816			
TM620.0	10,00 4-pole	1,00	31	10011	3103	21,00	820	530
		1,27	39	7866	2438			
		1,55	48	6439	1996			
		1,84	57	5435	1685			
		2,03	63	4929	1528			
TM620.0	15,00 4-pole	1,56	48	9592	2973	29,50	820	555
		1,85	57	8097	2510			
		2,04	63	7342	2276			
TM620.0	18,50 4-pole	1,90	58	9749	3022	37,00	850	595
		2,09	64	8840	2740			
		2,56	79	7219	2238			
TM620.0	22,00 4-pole	2,09	64	10512	3259	43,50	850	600
		2,56	79	8584	2661			

- Deviating performance data and speeds on request
- Weight incl. oil filling (ready for operation)
- Additional weight: approx. 25 kg for 100 mm additional length
- The L min. dimension increases by 200 mm for brake attachment

Standard widths [L] : 820, 850, 900 ... 1700 mm from 1700 mm reinforced version.

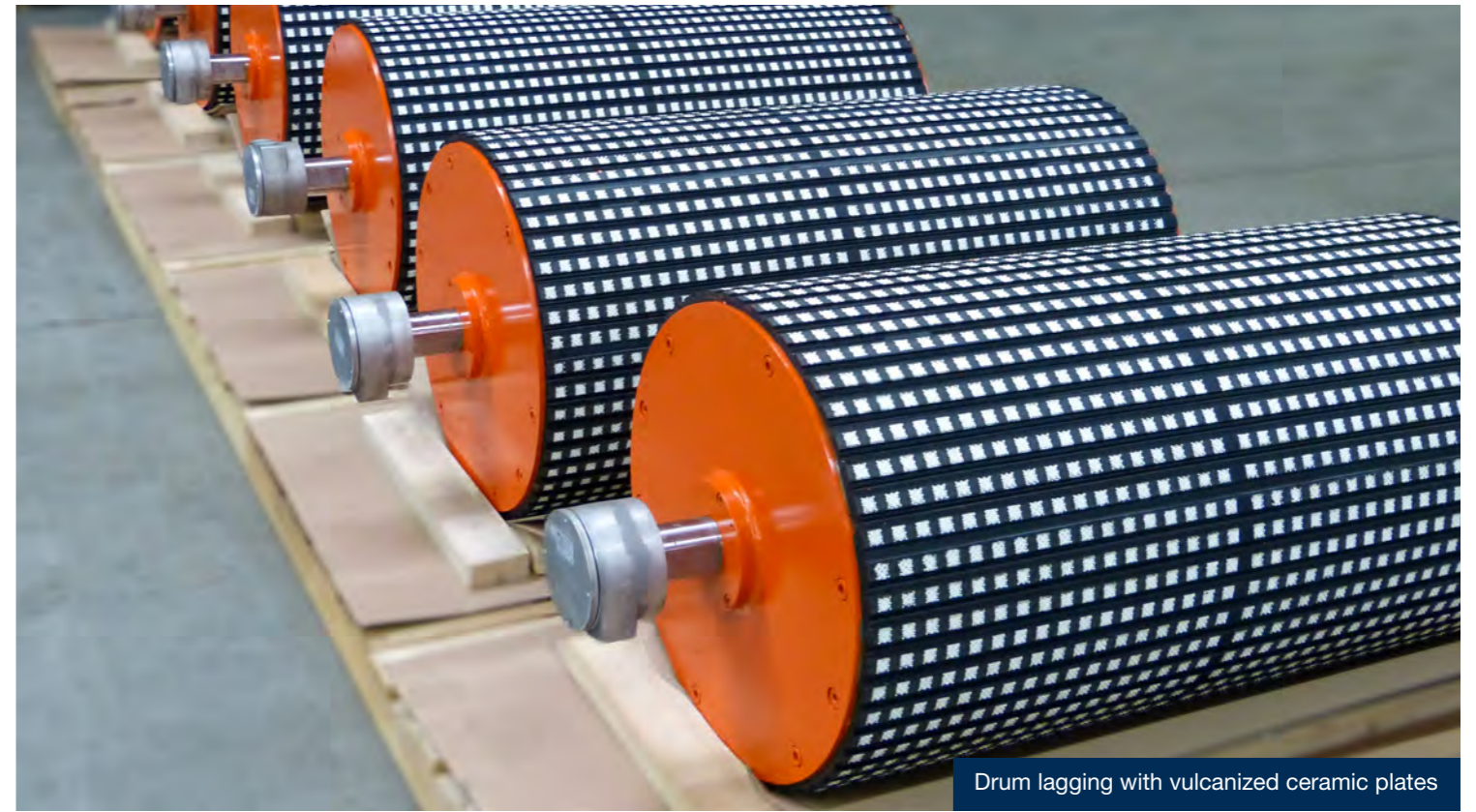
MODEL SERIES TM620

Execution types and options

Standard version
<ul style="list-style-type: none"> Spherically turned steel casing, bright steel, coated with rust protection IP65 Bearing end cover made of gray cast iron, painted to RAL 7031 Clamping spigot made of steel, coated with rust protection Spur gear with steel gearing (low-noise) Terminal box

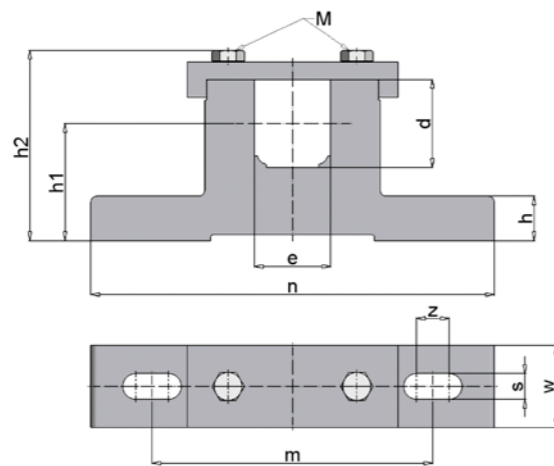
Options
<ul style="list-style-type: none"> Internal brake Backstop (ball bearing freewheel) Sprocket/toothed belt pulley Drum body cylindrical, rubberized, galvanized (customized) Stainless steel design Thermal contacts IP66 IP67 Suitable for frequency converter operation Terminal box design in stainless steel Vertical installation possible (specify when ordering) Food grade oil
Other versions available on request.

MODEL SERIES TM620



Drum lagging with vulcanized ceramic plates

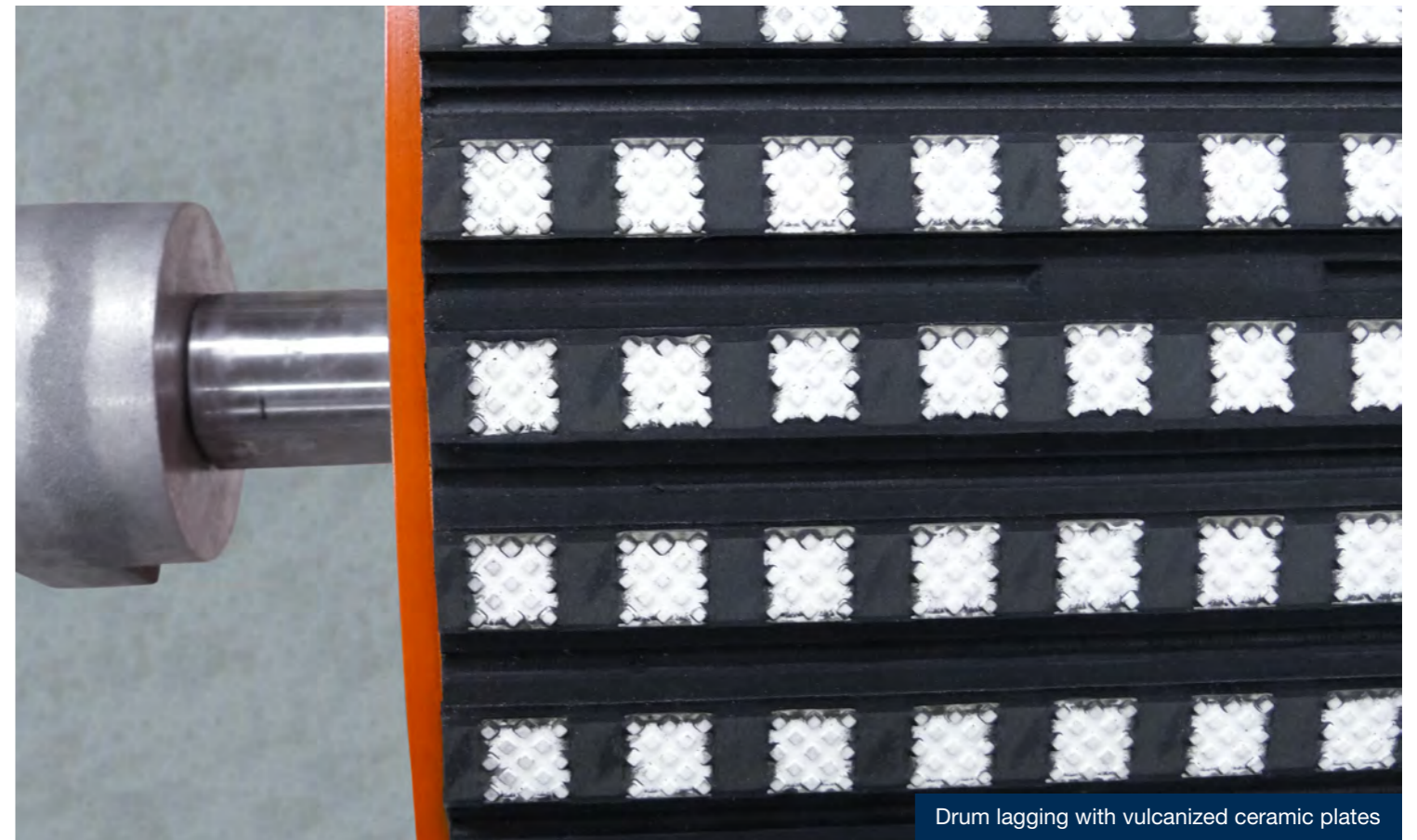
Clamping bearing for HIMMEL®-drum motor / HIMMEL® deflection drum type 620



all dimensions in mm

Drum type	Clamping bearing	d	e	h	h1	h2	m	n	s	w	z	M	Material	approx. kg
TM/UT620.0	EL75/65	75	65	38	100	162,5	240	345	22	70	28	M16	Steel	13,5

Color of the clamping bearings in RAL 7031



Drum lagging with vulcanized ceramic plates